



## Three Parts Telescopic Demolition Boom , Q355B Q690D Demolition Excavator Arm

Our Product Introduction

for more products please visit us on excavatorlongarm.com

### Basic Information

- Place of Origin: China
- Brand Name: Zhonghe Machinery
- Certification: CE, patent, ISO
- Model Number: CLB0024
- Minimum Order Quantity: 1 set / piece
- Price: USD6000/sets
- Packaging Details: bubble / wooden cases
- Delivery Time: 20-30/works
- Payment Terms: T/T, L/C
- Supply Ability: 800 sets

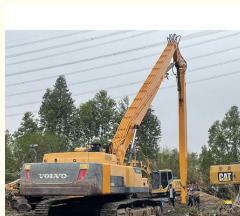


### Product Specification

- Material: Q355B, Q690D, Or Others As You Request
- Length: 17m, 20m, 25m, 30m
- Apply To: 25 Ton - 67 Ton Excavator
- Warranty: 6 Months
- Working Condition: Demolish Buildings
- Condition: New
- Color: As Customer Requires
- Application: Mining / Construction, mining, building Demolition And Special Engineering, rock, for Excavators
- Type: High Reach Demolition Boom
- Certification: ISO9001, ISO CE
- Oem: Available
- After-sales Service Provided: Online Support, Video Technical Support
- Technique: Advanced Techniques



### More Images



Our Product

### Product Description

#### High-Performance Demolition Excavator Telescopic Demolition Boom 10. Multi-Functional Excavator Boom

Excavator Demolition Boom Arm  
More details, contact Ada:  
Whatsapp: +86 15322105263  
Wechat/Tel: 0086 15322105263



## Product Description-----Excavator Demolition Boom

### High reach demolition boom/front

#### High-Reach Demolition Arm/Front

##### Usage:

This equipment is primarily utilized for the dismantling of tall structures. It offers a more efficient and safer alternative compared to conventional demolition practices.

##### Key Features:

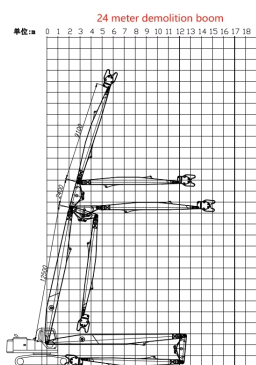
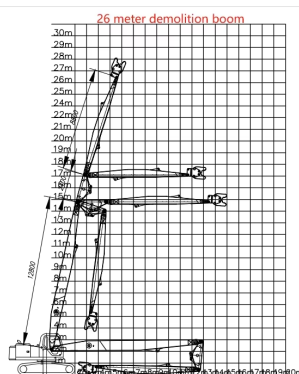
The three-part boom is specifically engineered for high-rise demolition, providing enhanced flexibility and safety over traditional methods.

Equipped with modular connections, the boom can be swiftly attached or detached to accommodate transport requirements and can also be adapted into a long-reach boom.

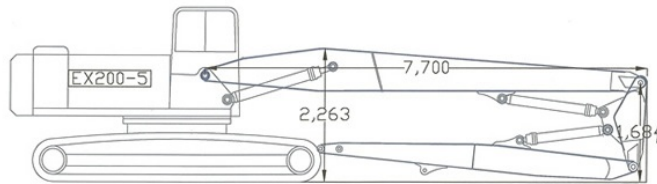
Optional installation for a camera is available.

Materials such as Q355B and Q690D can be used.

## Some common size references



Excavator (ton)	Total Length (mm)	Transport Height(mm)	Max Lift Height (mm)	Limit weight of hydraulic shear(kg)	Cylinder (Ton)	Counterweight (ton)
25 Ton	16000	3160	14900	2000	20 Ton	4T
30 Ton	18000	3300	17000	2000	20 Ton	4.5T
35 Ton	20000	3300	19000	2000	20 Ton	4.5T
40 Ton	22000	3400	21050	2000	20 Ton	5T
40 Ton	24000	3400	23100	2000	20 Ton	5T



#### Excavator demolition arm supports customization, the following is general data reference.

Our three-segment demolition arm offers adjustable lengths ranging from 16 to 35 meters, making it compatible with excavators weighing between 25 and 70 tons.

**Materials Used:** Q355B, Q690D, and a robust reinforcement plate ensure durability.

**Customization:** Color options can be tailored to client specifications.

**Suitable Applications:** Ideal for high-rise building demolitions, urban deconstruction, handling heavy materials, renovating old structures, and interior demolitions.



#### A complete set of demolition arm includes the following configurations:

8 pins

24 high-pressure hoses

1 set of connecting rod assembly

10 stop valves

1 bucket cylinder

5 butter hoses

Several gaskets, installation tools, etc.

Customers need to prepare 1 or 2 spare valve blocks and 2 foot valves, of course, our factory can also provide them.

If you need other cylinders and counterweights, we can prepare them for you and provide installation instructions for removing the boom and counterweights.

We can also customize various long arms according to any of your requirements.

Mainly used for high-rise building demolition, it is made of high-strength steel plate, perfectly matched with the crusher, and designed with spraying hose to minimize dust.

Different materials such as Q345B, Q690D, Weldox etc. are available and can also be selected according to the application.

If you can come to China, welcome to visit our factory. We are very happy to serve you.

#### Zhonghe Machinery Factory Advantages of Three-section Demolition Boom





## What sets our three-stage demolition arm apart?

Our design allows for complete lowering of the arm, and its accessories can rotate without needing disassembly. Unlike competitors, it can rotate while in transport without hitting the track plate.

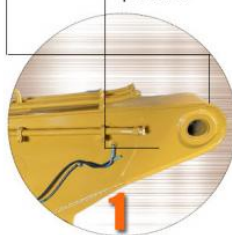
The arm features an impressive opening angle of nearly 180 degrees, enabling greater demolition height. We've upgraded the bucket cylinder pin with a 90-degree design for enhanced reliability during high-intensity operations.

We utilize top-tier products for our pipe designs and materials. Strict processing controls include pre-welding groove openings and trial assemblies to ensure precision. By reducing the internal rib spacing, we've enhanced the arm's rigidity and toughness, adding some weight for improved overall quality.

### Details Advantage

- More firmly due to whole plate bending

- Add reinforcement plate at the stress position



- Adopt 90mm pin to avoid pin breakage



- The opening angle of boom arm can reach 180°



The boom, middle arm and arm are designed in a golden ratio to maximize its effectiveness



- Seamless precision steel pipe

- three layers with four passes welding



- Graphite alloy copper sleeve

- The boom seat sleeve adopts all in one molding process

## Product Advantages

Process:

Every part of the demolition arm, from the pin sleeve to the steel plate, is carefully selected from reliable suppliers, and professional processing equipment plays an important role in each stage. CNC flame cutting machine is used to cut the steel into a good shape, beveling machine is used to bevel the plate edge for better welding, and bending machine is used to bend some steel plates. All our technical workers have rich work experience.

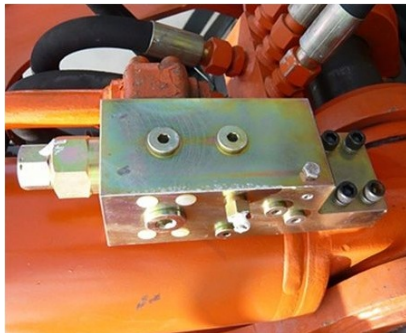
### Applications:

1. Demolition of high-rise buildings and structures.
2. Typically connected to hydraulic breakers, multiprocessors or hydraulic shears.

### Features:

- \* Heavy-duty construction.
- \* Designs are extensively simulated to ensure design integrity and detect potential stress and fatigue points
- \* Attachment auxiliary hydraulic lines.
- \* Hydraulic cylinders and safety check valves are supplied as a set
- \* Modular joints on the main boom for easy transportation.
- \* All surfaces are shot blasted.
- \* Marine epoxy paint is used as a primer.

With growing concerns for workplace safety and increasingly strict industry regulations, aerial work arms are rapidly becoming the go-to attachment for demolishing old structures. They replace traditional excavators, which are often prone to accidents during high-risk tasks on upper floors. Aerial work arms have revolutionized the demolition process, enhancing safety standards and significantly expanding the working radius and capabilities of attachments, areas where standard machines fall short. Their importance in modern demolition cannot be overstated.



### Safety Check Valves:

We can provide safety check valves upon customer request. These valves can be installed on hydraulic cylinders to enhance safety features.

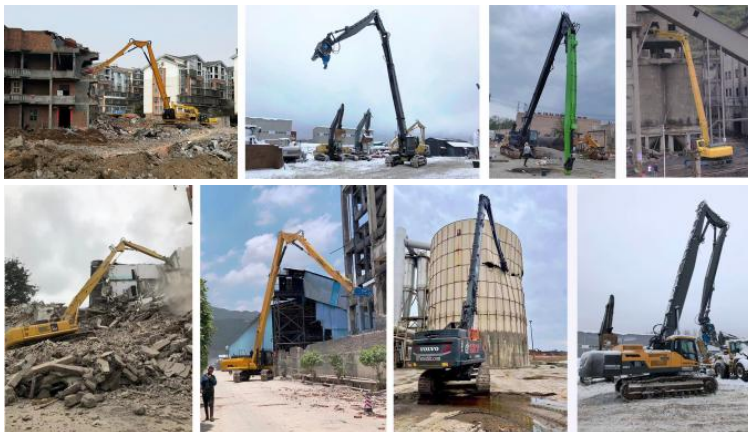
In case of a hydraulic system failure, the safety valve will securely lock and hold the load in position. It is critical that the safety valve remains uncompromised at all times. We offer reliable and proven technology designed to integrate seamlessly, ensuring that installation does not affect the normal operation of the excavator.



### High Reach Demolition Arm

- \* Seamless precision steel pipe
- \* Q690D for boom's upper and lower cover
- \* Adopt 90mm pin to avoid pin breakage
- \* The pipeline is hidden to avoid being smashed
- \* Hydraulic pipelines section design, convenient for later maintenance

## Excavator Demolition Boom Arm Engineering Case





The excavator demolition arm is designed for various challenging environments, including high-rise building demolitions, urban deconstruction, and heavy material handling. It operates effectively in confined spaces and can manage intricate tasks, such as interior demolitions in existing structures.

## Some Demolition Attachments With Demolition Boom

### Some Demolition Attachment with Demolition Boom



All demolition attachments and demolition  
boom arms are made in Zhonghe Machinery !!!

#### Related building demolition attachments for excavator demolition arms

**Hydraulic pulverizer:** It is suitable for demolition operations such as separating reinforced concrete.

1. Made of Hardox 500, light weight and wear-resistant.
2. The oil cylinder adopts honed tube and imported HALLITE oil seal, with short working cycle and long life.
3. The pin is made of 42CRMO alloy steel with built-in oil channel, high strength and good toughness.
4. The blade is made of wear-resistant alloy steel, resistant to high temperature and deformation.

**Multi crusher/Multi shear:** It is suitable for the demolition of high-rise buildings in the old city renovation and the demolition of abandoned factories, solving the problem of high-altitude operations; at the same time, it prevents the occurrence of safety accidents.

1. The scissor body is made of Hardox steel plate, which ensures maximum strength and best wear resistance;
2. The oil cylinder is installed in reverse, mainly to protect the oil cylinder rod, avoid damage, and extend the service life of the oil cylinder.

**Double cylinder shear:** The double cylinder shear adopts a specially made reinforced slewing bearing. The teeth of the slewing bearing are processed with high frequency, so it has better wear resistance and longer service life. This reinforced slewing bearing has a greater load-bearing capacity and can withstand loads in various directions at the same time. It is the one with the largest load-bearing capacity among slewing bearing products of the same level and can be used in harsh working conditions such as high-altitude demolition.

**Rock hammer/breaker hammer:** Suitable for mining, construction, demolition, highways, railways, ships, metallurgy, municipal gardens, etc. The impact energy-enhanced structure design of the breaker hammer; it adopts the optimal design concept, increases the piston and cylinder stroke, and uses the same diameter of the piston and drill rod, so that the breaker hammer and the main machine match better, reasonably utilizes the highest output energy, saves energy, and achieves the highest work efficiency; it is manufactured using high-quality materials and special precision technology.

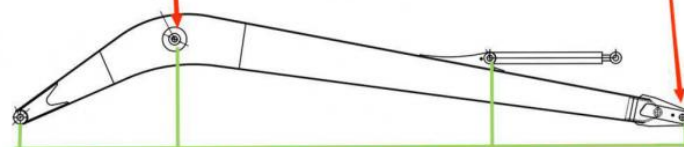


## High precision machine of Zhonghe Machinery Manufacturers

### Double-sided boring lathe



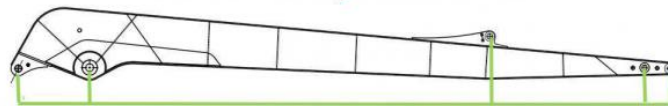
After the excavator boom and arm are assembled, the pins on the boom are drilled to ensure that the pins on the boom are parallel to each other and the cross section of the pin hole is perpendicular to the pin. The double-sided boring machine of the boom makes the hole position more accurate and the quality higher.



Make sure the cross section of the pin hole is perpendicular to the shaft.



Make sure the axis is parallel to the axis



Make sure the cross section of the pin hole is perpendicular to the shaft



Make sure the axis is parallel to the axis

#### Large Floor-Standing Double-Sided Boring and Milling Lathe:

**Improved Accuracy and Consistency:** The double-sided boring and milling lathe enhances the precision and uniformity of operations, ensuring consistent results.

**Post-Welding Processing:** After the welding process, the machine performs overall boring, ensuring the parallelism and perpendicularity of shaft holes.

**Primary Applications:** Primarily used for post-weld boring of the boom, small arm, and bucket, ensuring the accuracy and proper alignment of the boom.

**Simultaneous Boring on Both Sides:** The lathe performs boring on both sides at the same time, guaranteeing identical precision and consistency on both sides.

#### About Zhonghe Machinery Company Profile:



## Kaiping Zhonghe Machinery Manufacturing Co., Ltd.

Kaiping Zhonghe Machinery Manufacturing Co., Ltd. was established in 2018. It is an enterprise integrating production and trade. It specializes in customizing different types of excavator booms arms and attachments, such as excavator long arms, demolition arms, sliding arms, 2-3 section telescopic arms, tunnel arms, standard/rock buckets, grabs, ripper, etc., which are sold well in more than 60 countries and regions.

The following are our advantages:

1. Covers an area of about 18000 square meters
2. Staff size 120 people.
3. Technical equipment (2 sets of plasma, CNC cutting machines, 3 milling machines, a set of precision floor boring machines, One set of chamfering and beveling machines, two large lathes/drilling machines, a large shot blasting workshop, a stress relief workshop, a large plate rolling machine, and a high -purity mixed gas supply station, etc.)
4. Our company offers customers a comprehensive production line of custom-designed, custom-made, and delivered products.
5. Prompt lead time: 7-25 days
6. Annual production amount 600 sets of excavator booms We adhere to "Merit Quality, Sincerity Management and Customer Satisfaction", honestly greet customers from home and abroad to negotiate and cooperate with us.

### CE certification & Utility model patent certificates



Our products have been exported to over 60 countries, utilizing various transportation methods such as sea, land, and air freight. For packaging, we use either wooden crates or stretch film to secure the products. Before shipment, the goods are carefully packaged and then loaded into containers to ensure their safety during transit.

### Packaging & Shipping





### FAQ(Some frequently asked questions):

#### Q: Are you a manufacturer?

A: Zhonghe machinery offered a wide range of attachment parts for excavators and dozers. Such as long reach arm, demolition arm, telescopic arm, standard bucket, rock bucket, cleaning bucket, tilting bucket, etc. We know that the perfect combination of high-quality cast steel products and a moderate price is the key to the success.

#### Q: What material is the excavator demolition boom made of?

A: Shaogang Q355B, Shaogang's material has the advantages of good toughness, high welding performance, and not easy to crack. Q355B has good welding performance and can be processed at room temperature. The standard arm material of the host manufacturer is also Q355B, which is easier to purchase on the market and the subsequent maintenance cost is also simple. If the customer's working conditions are bad, we will also use Q690 material, the long arm will be made lighter and more efficient

#### Q: Why choose Zhonghe over other companies?

A: We offer a highly skilled production and design team that delivers high-quality, customized solutions tailored to each customer's needs. Our commitment to precision and customer service has earned us a strong reputation in China, with annual sales consistently ranking among the top in the industry.

#### Q: What are your terms of payment?

A: We prefer T/T (50/50) payment terms, and for trial orders, we recommend using **Ali Credit Insurance** for added security.

Any information, pls contact Ada!!!!

Whatsapp: +86 15322105263

Wechat/Tel: 0086 15322105263

E-mail: abby@excavatorboomarm.com



**Jiangmen Kaiping Zhonghe Machinery Manufacturing Co., Ltd**



+86 13822325403



aria@excavatorlongarm.com



excavatorlongarm.com

9 Huancui West Road, Cuishanhu New Area, Kaiping City, Guangdong Province, China