



## Construction Equipment Boom Tunnel Excavator Arm Short Reach Q355B Material

Our Product Introduction

for more products please visit us on excavatorlongarm.com

### Basic Information

- Place of Origin: China
- Brand Name: Zhonghe Machinery
- Certification: CE, patent, ISO
- Model Number: SDB0015
- Minimum Order Quantity: 1 set / piece
- Price: USD 190.00-USD5650.00
- Packaging Details: bubble or wooden case
- Delivery Time: 6-35/works
- Payment Terms: T/T, L/C or others as you request
- Supply Ability: 7 sets per week

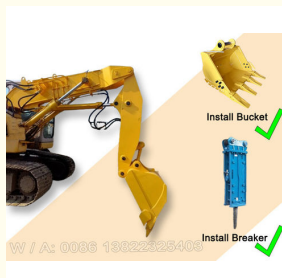


### Product Specification

- Material: Shaogang Q355B
- Suitable Working Condition: Tunnel Construction Work, Work In Narrow Places
- Cylinders: Enlarge Cylinders
- Plate Thickness: Thicker
- Warranty: 6 Months
- Apply To: 6 Ton - 50 Ton Excavator
- Highlight: Short Reach Construction Equipment Boom, Short Reach Tunnel Excavator Arm, Q355B Material Tunnel Excavator Arm



### More Images



## Product Description

### Shorten Excavator Tunnel Arm with Bucket / Breaker Digging Tunnel with Bucket / Breaker

Here is our catalog: [2024 Zhonghe Machinery-Product Catalog.pdf](#)

#### Quick Detail of excavator shorten arm shorten boom:

Shorten and reinforced excavator tunnel arm tunnel boom, the steel plates is high reinforced

Suitable for digging tunnels and narrow places

Stay away from damage

With full protection

#### Description:

Excavator short arm short boom is frequently used in digging narrow places like tunnels. The design of excavator shorten arm shorten boom is smaller than normal arm normal boom. The front attachments equip on the excavator tunnel arm tunnel boom is larger bucket or breaker. The customizable excavator shorten arm shorten boom is stronger than standard one. For working in tunnel / digging hard sand hard rock, there is high requirement for the plate thickness. Excavator shorten arm shorten boom's plate thickness is enhanced and reinforced. The longevity and working effective is enhanced.



### Excavator Short Arm

#### Suitable Working Condition:

##### Narrow Places:



.....

#### Digging Tunnels



## Excavator Short Arm

Suitable Working Condition:

Narrow Places:



Digging Basements

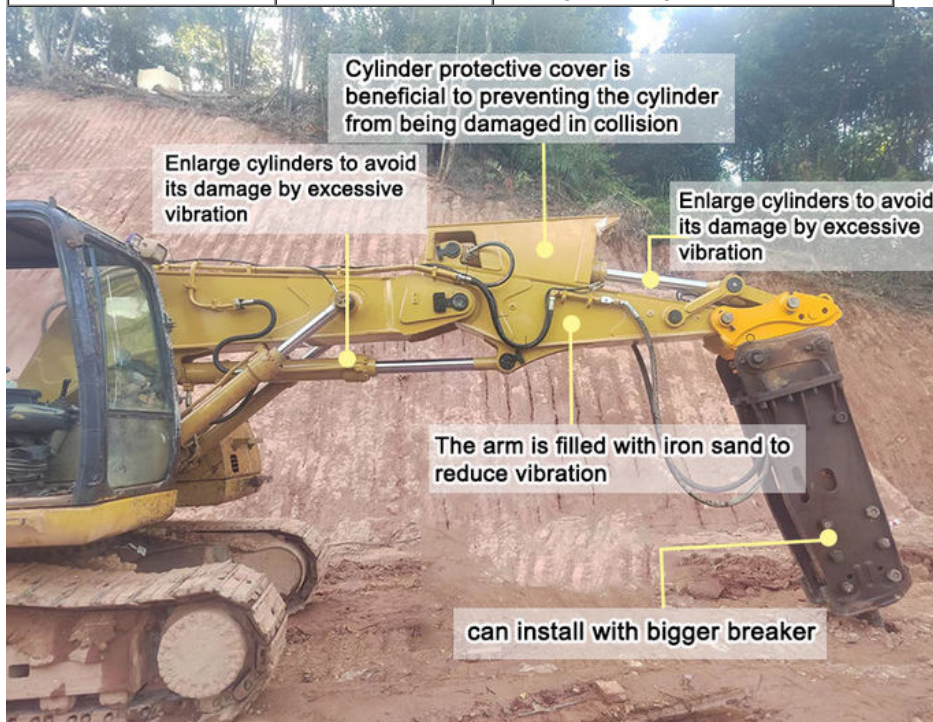


Digging Tunnels

Front Attachments: enlarge bucket / breaker

Specification:

Excavator Model ( ton)	Plate Thickness (mm)	Weight (kgs)
6-8 ton	10mm	590kgs 380kgs
10-15 ton	14mm	1130kgs 900kgs
20-24 ton	16mm	1300kgs 1050kgs
30-36 ton	25mm	2900kgs 2600kgs
45-50 ton	30mm	3200kgs 3000kgs



Production Process:

## Tunnel boom

• Meets the needs for powerful

• A true customised reliable



machines on rock breaker projects in confined tunnels

performer, with robust cylinder guard,,capable of break rock more effective, and with significantly smaller footprint.

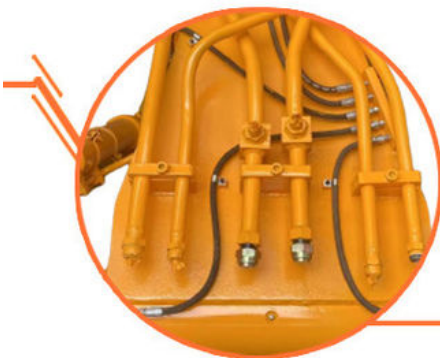
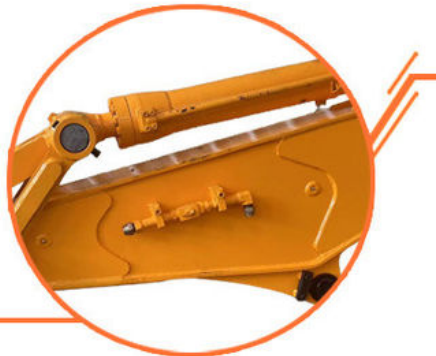


## High effectiveness

1. On the same machine, tunnel arm can obtain greater lifting capacity than standard arm.
2. Opening angle between boom and arm can reach 180 degrees

## Robust structure

1. The upper and lower cover plates are thicker.
2. The arm is filled with iron sand to reduce vibration
3. Robust cylinder guard



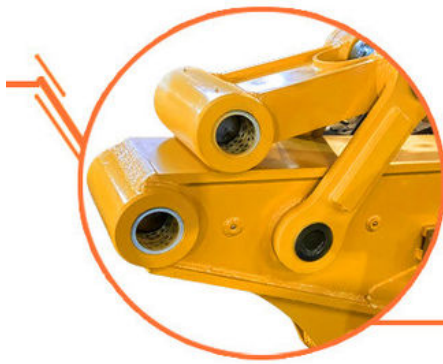
## Avoid oil leakage

1. Stop valves prevent oil leakage when replacing breaker by bucket.
2. Multi-layer welding for pipe connectors

## Long service life

1. Cylinder protective cover design
2. Q355B material, high-quality accessories, full weld, reinforced stress position, etc.





## Pivot end

HD Boom with pivot end reinforcement Single piece design & thicker steel plates

---

Positive feedback from clients:

# Feedback from Clients



from Shonn:  
very good tunnel boom.  
equip my breaker perfect



from Tonny:  
the boom is strong.  
excellent performance



from Mike:  
safe and high-effective  
very nice



from Tommy:  
the boom works very  
good. strong

WIA: +86 13822325403





Established in 2018, Kaiping Zhonghe Machinery is a combination of manufacturing and trading. Our products, including excavator long reach booms, demolition arms, 2-3 sections telescopic arms, tunnel arms, standard/rock buckets, grapples, and rippers, have been selling well in more than 40 countries and areas.

We are located in Guangdong Province, China. A 18000 m<sup>2</sup> 50 welding workers with over 7 years experience, 30 senior designers, and a high-tech R&D team (10+ years on customization, 100+ technical patents), strict production system (6+ years quality control and cost control) and warm-hearted service team. Our annual output of various types of excavator boom arms can reach up to 600 sets.

We strive to uphold our core principles of "Merit Quality, Sincerity Management, and Customer Satisfaction".

**Welcome to contact for Big Discount.**

**Whatsapp: 0086 13822325403**



**Jiangmen Kaiping Zhonghe Machinery Manufacturing Co., Ltd**



+86 13822325403



aria@excavatorboomarm.com



excavatorlongarm.com

9 Huancui West Road, Cuishanhu New Area, Kaiping City, Guangdong Province, China