



## High Effective Excavator Telescopic Arm For 14M 15M 16M Deep Excavation

Our Product Introduction

for more products please visit us on excavatorlongarm.com

### Basic Information

- Place of Origin: China Guangdong
- Brand Name: Zhonghe Machinery
- Certification: CE, patent, ISO
- Model Number: LDSSS001
- Minimum Order Quantity: 1 set / piece
- Price: USD 100-7000
- Packaging Details: bubble, wooden cases or others as you request
- Delivery Time: 7-30 working days
- Payment Terms: T/T, L/C
- Supply Ability: 7 sets per week



### Product Specification

- Material: Q690D / HG785 / Q355B
- Situation: New
- Digging Depth: 6m-16m
- Apply To: 6 Ton - 36 Ton Excavator
- Quality: Premium
- Excavator Accessories: Bucket And Other Accessories
- Highlight: **High Effective Excavator Telescopic Arm, 16M Deep Excavation Telescopic Arm, 15M Deep Excavation Telescopic Arm**



### More Images



## Product Description

### High Working Effective Excavator Telescopic Arm Excavator Long Arm with Bucket Digging Foundation Pit

Click here to have our catalog: [2024 Zhonghe Machinery--Product Catalog.pdf](#)

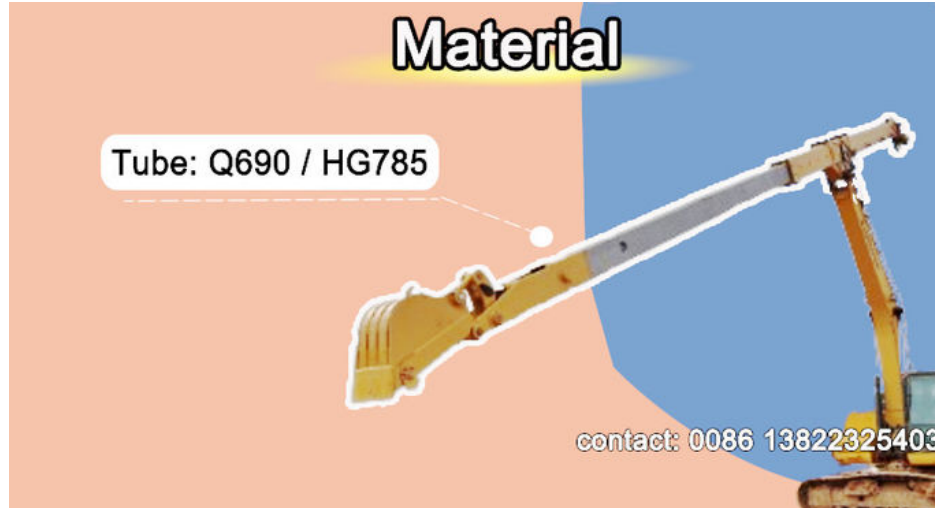
#### Quick Detail:

Telescopic arm's Stronger and Lighter Material: Q690D / HG785

Telescopic arm's Digging Depth: Reach 14M 15M 16M or more

Telescopic arm armed with Less Maintainment: The exposed bucket cylinder of telescopic boom excavator can be replaced without disassembling arm.

Telescopic arm with Longer Life-span: The places which bear large stress are reinforced



#### Description:

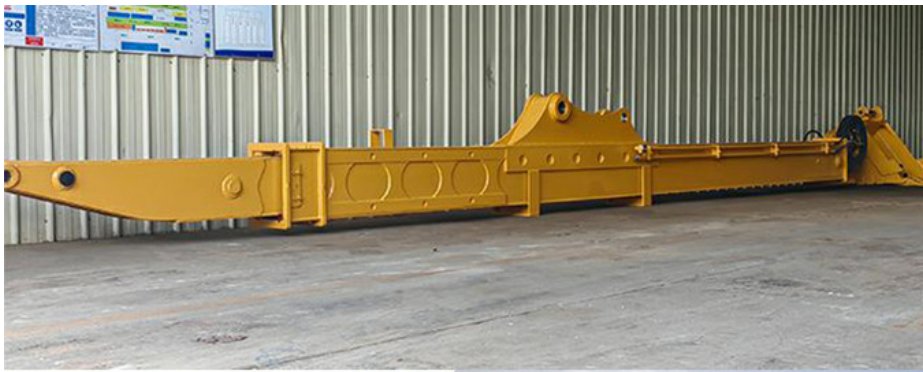
The telescopic boom of the excavator features a two-section design, allowing it to be fitted with either a standard bucket or a clamshell bucket. The primary operation of the telescopic arm involves extending and retracting, providing flexibility in various tasks. The excavator's boom arm plays a crucial role in its performance. Constructed with durable materials and a robust design, the long arm excavator is reinforced to ensure longevity and high operational efficiency.

#### Specification:

One set of two-section telescopic arm include: One telescopic boom, one Bucket, one Bucket Cylinder, One set of Lickage, other accessories

Suitable Excavator Model (ton)	Maximum Digging Depth (m)
6T	6m
20-36T	14m
24-36T	15m
25-36T	16m

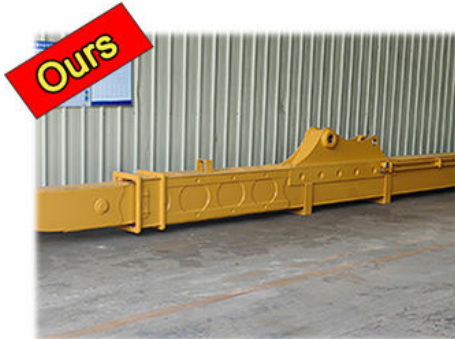
Please send your excavator model directly to us, suitable recommend will be available.



#### The detail of Excavator Telescopic Boom Telescopic Arm:

Robust structure

1. To improve the longer life-span, bearing part with multi-layer reinforced.



**Multi-layer reinforcement  
of stress-bearing parts**



**without reinforment**

Long service life

1. The reel adopts enlarged spring piece  
Excavator sliding boom arm is designed with longer life-span.
2. Adopt 22-ton strong bucket cylinder





**The reel adopts enlarged spring piece**



**Others**



**common type**

Avoid oil leakage

The cylinders are important, the telescopic arm for sale is leading by extending and retracting.

1. The telescopic cylinder adopts double oil seals



2. Hydraulic hoses are made of four-layer steel wire ring.

4. Bucket cylinder hose was built-in to avoid oil leakage caused by hose vibration

Easy to maintain

The cylinder of the excavator boom arm is long, the tube steels are long.

1. Lubrication system for sliders help support better easily.

# Feedback from Clients



from Jonson:  
the telescopic boom is suitable for digging caisson. excellent performance.



from Ryon:  
deeper digging depth. work effectively. nice service



from Ton:  
Very excellent telescopic boom. on my excavator suitably. very good job



from Cris:  
safe and balanced. premium excavator boom. perfect

2. Bucket cylinder hoses can be replaced easily, without dismantling the arm.





Established in 2018, Kaiping Zhonghe Machinery is a combination of manufacturing and trading. Our products, including excavator long reach booms, demolition arms, 2-3 sections telescopic arms, tunnel arms, standard/rock buckets, grapples, and rippers, have been selling well in more than 40 countries and areas.

We are located in Guangdong Province, China. A 18000 m<sup>2</sup> 50 welding workers with over 7 years experience, 30 senior designers, and a high-tech R&D team (10+ years on customization, 100+ technical patents), strict production system (6+ years quality control and cost control) and warm-hearted service team. Our annual output of various types of excavator boom arms can reach up to 600 sets.

We strive to uphold our core principles of "Merit Quality, Sincerity Management, and Customer Satisfaction".



Welcome to contact Aria for discounts.

Whatsapp: [0086 13822325403](https://wa.me/008613822325403)



**Jiangmen Kaiping Zhonghe Machinery Manufacturing Co., Ltd**



+86 13822325403



aria@excavatorboomarm.com



excavatorlongarm.com

9 Huancui West Road, Cuishanhu New Area, Kaiping City, Guangdong Province, China