



## Hydraulic Demolition Boom Heavy Duty Demolition Arm for PC300 CAT336

Our Product Introduction

for more products please visit us on excavatorlongarm.com

### Basic Information

- Place of Origin: China
- Brand Name: Zhonghe Machinery
- Certification: CE, patent, ISO
- Model Number: CLB0024
- Minimum Order Quantity: 1 set / piece
- Price: USD7000/sets
- Packaging Details: bubble / wooden cases
- Delivery Time: 20-30/works
- Payment Terms: T/T, L/C
- Supply Ability: 800 sets



### Product Specification

- Material: Q355B, Q690D, Or Others As You Request
- Length: 17m, 20m, 25m, 30m
- Apply To: 25 Ton - 67 Ton Excavator
- Warranty: 6 Months
- Working Condition: Demolish Buildings
- Condition: New
- Color: As Customer Requires
- Application: Mining / Construction, mining, building Demolition And Sepcial Engineering, rock, for Excavators
- Type: High Reach Demolition Boom
- Certification: ISO9001, ISO CE
- Oem: Available
- After-sales Service Provided: Online Support, Video Technical Support
- Technique: Advanced Techniques



### More Images



## Product Description

### Hydraulic Demolition Boom Heavy-Duty Demolition Arm Upgraded Boom for Excavator Demolition for PC300 CAT336



### Product Description-----Excavator Demolition Boom

#### What is an Excavator Demolition Arm?

An excavator demolition arm is a specialized attachment designed to expand the demolition reach and capabilities of standard excavators, particularly for demolishing high-rise structures. These arms are used for the safe dismantling of buildings, bridges, and other large structures. Key features include:

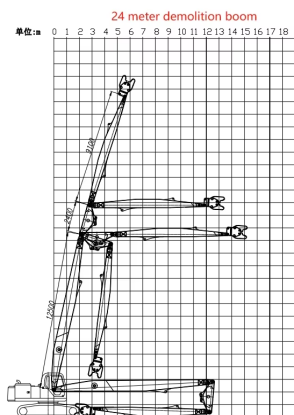
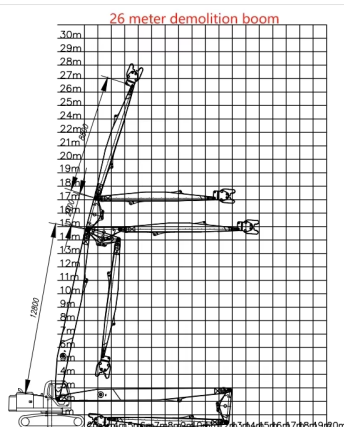
**Extended Reach:** Allows the excavator to reach greater heights, often up to 30 meters or more, making it ideal for high-rise demolitions.

**Heavy-Duty Construction:** Built to handle the additional stress and force involved in demolition, especially when used with hydraulic shears or crushers.

**Customization:** The demolition arm can be customized according to the specific project requirements, including arm length and compatibility with various attachments.

**Safety:** Operator safety is a priority, with some models featuring tilting cabins and improved visibility for precise demolition. This attachment is highly effective for controlled demolition in urban environments, often used in conjunction with hydraulic attachments such as pulverizers, shears, or crushers. These systems allow for precise demolition without compromising the structural integrity of nearby buildings.

### Some common size references



Excavator (ton)	Total Length (mm)	Transport Height(mm)	Max Lift Height (mm)	Limit weight of hydraulic shear(kg)	Cylinder (Ton)	Counterweight (ton)
25 Ton	16000	3160	14900	2000	20 Ton	4T
30 Ton	18000	3300	17000	2000	20 Ton	4.5T
35 Ton	20000	3300	19000	2000	20 Ton	4.5T

40 Ton	22000	3400	21050	2000	20 Ton	5T
40 Ton	24000	3400	23100	2000	20 Ton	5T

**Excavator demolition arm supports customization, the following is general data reference.**

**Our three-section demolition arm can produce lengths:** 16-35 meters suitable for 25-70 tons of excavators

**Material:** Q355B, Q690D, strong reinforcement plate.

**Color:** can be customized or painted according to customer requirements.

**Applicable working conditions:** high-rise building demolition, urban environment demolition, heavy material handling, old building renovation, building interior demolition, etc.

## Zhonghe Machinery Factory Advantages of Three-section Demolition Boom



### The Advantages of our demolition boom excavator:

1. The demolition arm we designed can be completely lowered, and the accessories we carry can be rotated without disassembly. **In the transport state, this arm can also rotate**, while other manufacturers' designs cannot rotate and will hit the track plate.(P1)

2. The opening angle of the demolition arm can be larger, **basically reaching 180 degrees**, allowing the demolition height to be higher.

We have **enlarged the pin of the bucket cylinder and adopted a 90-degree pin** to ensure that the pin is not prone to problems under high-intensity operations(P2)

3. We currently use the best products on the market in terms of pipe design, pipe materials, and joint materials.

We **strictly control the processing requirements**, and must **open grooves for welding and conduct trial assembly** before leaving the factory to ensure precision control.

We shortened the distance between the internal ribs to **increase the rigidity of the demolition arm and ensure toughness, but also increased a certain amount of weight**, which improved the quality of the product.



4. Seamless precision steel pipe

5. Q690D for boom's upper and lower cover

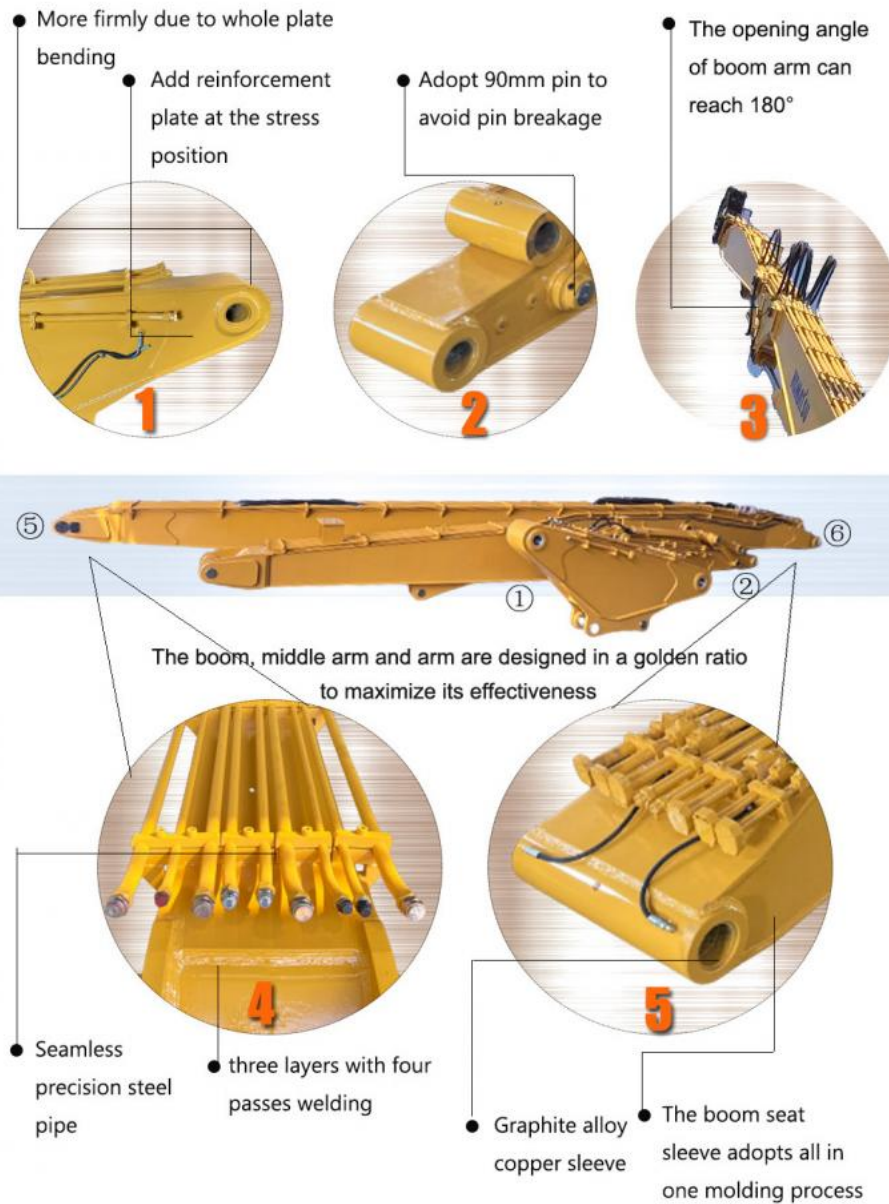
6. Adopt 90mm pin to avoid pin breakage

7. The pipeline is hidden to avoid being smashed

8. Hydraulic pipelines section design, convenient for later maintenance



## Details Advantage



## Product Detail Display



#### Strength reinforcement

With strong reinforcement plate, the whole bending is more solid and lubrication is centralized.

#### Seamless precision steel pipe

Centralized lubrication system. Three layers with four passes welding. The boom seat sleeve adopts all in one molding process.

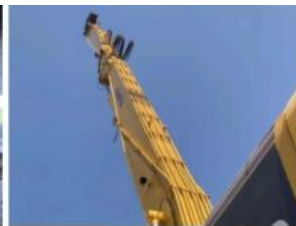
#### Q690D Materials

Enlarge the bucket cylinder. The pipeline is hidden to avoid being smashed. Adopt 90mm pin to avoid pin breakage.



#### Boom, middle arm arms can be bent to 90 degrees.

Multi-layer reinforcing rib plate at the stress place, more firm, integrated molding. The box has built-in transverse and vertical reinforcement ribs to improve its tensile strength.



#### Fully extended to 180°

The opening angle of boom arm can reach 180°. The boom, middle arm and arm are designed in a golden ratio to maximize its effectiveness.



#### Easy maintenance

Hydraulic pipelines section design, convenient for later maintenance. All products are customized, supporting ODM and OEM customization.

### Excavator Demolition Boom Arm Engineering Case



**Excavator demolition arm is a kind of equipment specially designed for demolition engineering, suitable for the following working conditions:**

Suitable working conditions

1. **Demolition of high-rise buildings:** The long arm design of the demolition arm can easily reach high places, which is suitable for the demolition of high-rise buildings.
2. **Demolition in urban environment:** In small or crowded urban environments, the demolition arm can effectively reduce the interference with surrounding buildings and facilities.
3. **Precision demolition:** The high precision of the demolition arm can be used for demolition tasks that require precise control, such as the demolition of structural elements.
4. **Heavy material handling:** It can easily handle heavy building materials such as concrete and steel, suitable for large demolition projects.

#### Demolition Boom Advantages:

1. **Expanded working range:** Special arms can expand the working range of the excavator to areas that are difficult to access with standard arms.
2. **Improved operating efficiency:** Special arms are designed for special environments such as deep pits or high walls, which can improve working efficiency.
3. **Tailored for specific tasks:** Special arms can adapt to unique excavation and processing tasks, such as riverbed dredging or debris removal after blasting.
4. **Customized performance:** Depending on the work requirements, the length, angle and attachments of special arms can be customized for optimal task execution.
5. **Save time and cost:** Special arms reduce the need to frequently reposition the excavator, saving time and fuel costs.
6. **Reduce excavator wear:** By enabling work at a longer distance, special arms minimize the frequent movement of the excavator over a short distance, thereby reducing wear.

Excavator-specific arms are a highly customized solution designed to meet specific operational needs.

### Some Demolition Attachments With Demolition Boom



All demolition attachments and demolition boom arms are made in Zhonghe Machinery !!!

#### Related building demolition attachments for excavator demolition arms

The excavator demolition arm can be used with a variety of attachments to meet different demolition needs. The following are some common attachments:

- Breaker:** used to break concrete and other hard materials, suitable for large-scale demolition projects.
  - Hydraulic pliers:** used to grab and remove large pieces of material, suitable for various demolition projects.
  - Rotary shears:** used to cut and remove various materials, suitable for complex demolition tasks.
  - Hydraulic hammer:** used to break and remove concrete and other hard materials, suitable for large-scale demolition projects.
  - Hydraulic shears:** used to cut and remove steel bars and other metal structures, suitable for demolishing steel structures.
- These attachments can be selected and combined according to specific demolition needs to improve demolition efficiency and

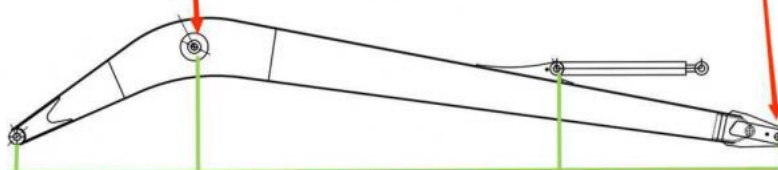


## High precision machine of Zhonghe Machinery Manufacturers

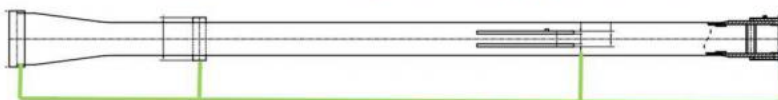
### Double-sided boring lathe



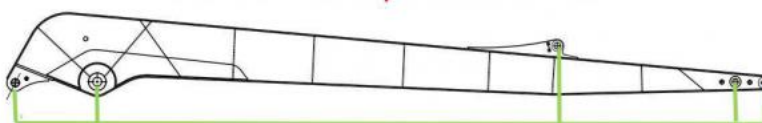
After the excavator boom and arm are assembled, the pins on the boom are drilled to ensure that the pins on the boom are parallel to each other and the cross section of the pin hole is perpendicular to the pin. The double-sided boring machine of the boom makes the hole position more accurate and the quality higher.



Make sure the cross section of the pin hole is perpendicular to the shaft.



Make sure the axis is parallel to the axis



Make sure the cross section of the pin hole is perpendicular to the shaft



Make sure the axis is parallel to the axis

## Large Floor-Standing Double-Sided Boring and Milling Lathe:

**Improved Accuracy and Consistency:** The double-sided boring and milling lathe enhances the precision and uniformity of operations, ensuring consistent results.

**Post-Welding Processing:** After the welding process, the machine performs overall boring, ensuring the parallelism and perpendicularity of shaft holes.

**Primary Applications:** Primarily used for post-weld boring of the boom, small arm, and bucket, ensuring the accuracy and proper alignment of the boom.

**Simultaneous Boring on Both Sides:** The lathe performs boring on both sides at the same time, guaranteeing identical precision and consistency on both sides.

**Why is it necessary to use it with an extended arm?**

**Increased Reach:** An extended arm allows the machine to reach deeper into the workpiece, enabling it to bore or mill areas that would otherwise be inaccessible.

**Improved Stability:** The extended arm provides additional support and stability, which is crucial for maintaining precision during heavy-duty machining operations.

**Versatility:** The extended arm can be equipped with various tools and attachments, making the machine more versatile and capable of handling a wider range of tasks.

**Efficiency:** By extending the reach of the machine, the extended arm can reduce the need for repositioning the workpiece, saving time and increasing overall efficiency.

---

## About Zhonghe Machinery Company Profile:



## Kaiping Zhonghe Machinery Manufacturing Co., Ltd.

Kaiping Zhonghe Machinery Manufacturing Co., Ltd. was established in 2018. It is an enterprise integrating production and trade. It specializes in customizing different types of excavator booms arms and attachments, such as excavator long arms, demolition arms, sliding arms, 2-3 section telescopic arms, tunnel arms, standard/rock buckets, grabs, ripper, etc., which are sold well in more than 60 countries and regions.

The following are our advantages:

1. Covers an area of about 18000 square meters
2. Staff size 120 people.
3. Technical equipment (2 sets of plasma, CNC cutting machines, 3 milling machines, a set of precision floor boring machines, One set of chamfering and beveling machines, two large lathes/drilling machines, a large shot blasting workshop, a stress relief workshop, a large plate rolling machine, and a high -purity mixed gas supply station, etc.)
4. Our company offers customers a comprehensive production line of custom-designed, custom-made, and delivered products.
5. Prompt lead time: 7-25 days
6. Annual production amount 600 sets of excavator booms We adhere to "Merit Quality, Sincerity Management and Customer Satisfaction", honestly greet customers from home and abroad to negotiate and cooperate with us.

---

## CE certification & Utility model patent certificates





Our products have been exported to over 60 countries, utilizing various transportation methods such as sea, land, and air freight. For packaging, we use either wooden crates or stretch film to secure the products. Before shipment, the goods are carefully packaged and then loaded into containers to ensure their safety during transit.

## Packaging & Shipping



## FAQ(Some frequently asked questions):

### Q: Are you a manufacturer?

A: Yes. We are manufacturer. Zhonghe machinery offered a wide range of attachment parts for excavators . Such as long reach arm, demolition arm, telescopic arm, standard bucket, rock bucket etc. We know that the perfect combination of high-quality cast steel products and a moderate price is the key to the success.

### Q:Three-stage demolition arm, what are our advantages?

A: 1. The demolition arm we designed can be completely lowered, and the accessories we carry can be rotated without disassembly. In the transport state, this arm can also rotate, while other manufacturers' designs cannot rotate and will hit the track plate.  
2. The opening angle of the demolition arm can be larger, basically reaching 180 degrees, allowing the demolition height to be higher. We have enlarged the pin of the bucket cylinder and adopted a 90-degree pin to ensure that the pin is not prone to problems under high-intensity operations.  
3. We currently use the best products on the market in terms of pipe design, pipe materials, and joint materials. We strictly control the processing requirements, and must open grooves for welding and conduct trial assembly before leaving the factory to ensure precision control. We shortened the distance between the internal ribs to increase the rigidity of the demolition arm and ensure toughness, but also increased a certain amount of weight, which improved the quality of the product.

### Q: Why choose Zhonghe over other companies?

A: We offer a highly skilled production and design team that delivers high-quality, customized solutions tailored to each customer's needs. Our commitment to precision and customer service has earned us a strong reputation in China, with annual sales consistently ranking among the top in the industry.

**Q: What are your terms of payment?**

**A:** We prefer T/T payment terms, and for trial orders, we recommend using **Ali Credit Insurance** for added security.

Any information, pls contact Ada!!!!

Whatsapp: +86 15322105263

Wechat/Tel: 0086 15322105263

E-mail: abby@excavatorboomarm.com



**Jiangmen Kaiping Zhonghe Machinery Manufacturing Co., Ltd**



+86 13822325403



aria@excavatorboomarm.com



excavatorlongarm.com

9 Huancui West Road, Cuishanhu New Area, Kaiping City, Guangdong Province, China