



## 3 Section Long Reach Excavator Demolition Arm High Reach Boom For Cat Komatsu

Our Product Introduction

for more products please visit us on excavatorlongarm.com

### Basic Information

- Place of Origin: China
- Brand Name: Zhonghe Machinery
- Certification: CE, patent, ISO
- Model Number: CLB0024
- Minimum Order Quantity: 1 set / piece
- Price: USD7000/sets
- Packaging Details: bubble / wooden cases
- Delivery Time: 20-30/works
- Payment Terms: T/T, L/C
- Supply Ability: 800 sets



### Product Specification

- Material: Q355B, Q690D, Or Others As You Request
- Length: 17m, 20m, 25m, 30m
- Apply To: 25 Ton - 67 Ton Excavator
- Warranty: 6 Months
- Working Condition: Demolate Buildings
- Condition: New
- Color: As Customer Requires
- Application: Mining / Construction, mining, building Demolition And Sepcial Engineering, rock, for Excavators
- Type: High Reach Demolition Boom
- Certification: ISO9001, ISO CE
- Oem: Available
- After-sales Service Provided: Online Support, Video Technical Support
- Technique: Advanced Techniques



### More Images



**Product Description**

**Cost-Effective Long Reach Excavator Arms Demolition Arm for Excavator  
Excavator High-Reach Boom for Cat Komatsu**



**Product Description-----Excavator Demolition Boom**

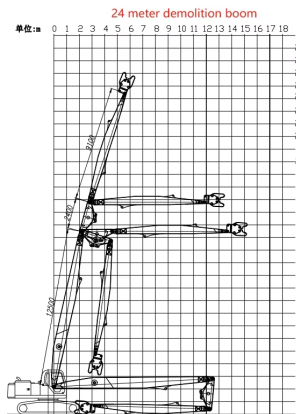
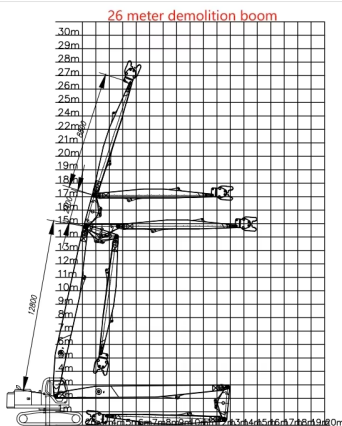
**What is an Excavator Demolition Arm?**

An Excavator Demolition Arm is a specialized attachment designed to extend the demolition reach and capabilities of a standard excavator, especially for demolishing tall buildings. These arms are used to safely demolish buildings, bridges, and other large structures. Key features include:

1. **Extended Reach:** Allows the excavator to reach greater heights, often up to 30 meters or more, making it ideal for tall building demolition.
2. **Heavy-Duty Construction:** Designed to handle the additional stress and forces generated during demolition, especially when used with attachments such as hydraulic shears or breakers.
3. **Customization:** Demolition arms can be customized to the specific requirements of a project, including arm length and compatibility with a variety of attachments.
4. **Safety:** Enhanced operator safety is a top priority, and some models feature a tilting cab and better visibility for precise demolition.

This attachment is very effective for controlled demolition in urban environments and is often used in conjunction with hydraulic attachments such as pulverizers, shears, or breakers. These systems allow for precise demolition without compromising the structural integrity of surrounding buildings.

**Some common size references**



Excavator (ton)	Total Length (mm)	Transport Height(mm)	Max Lift Height (mm)	Limit weight of hydraulic shear(kg)	Cylinder (Ton)	Counterweight (ton)
25 Ton	16000	3160	14900	2000	20 Ton	4T
30 Ton	18000	3300	17000	2000	20 Ton	4.5T

35 Ton	20000	3300	19000	2000	20 Ton	4.5T
40 Ton	22000	3400	21050	2000	20 Ton	5T
40 Ton	24000	3400	23100	2000	20 Ton	5T

**Excavator demolition arm supports customization, the following is general data reference.**

**Our three-section demolition arm can produce lengths:** 16-35 meters suitable for 25-70 tons of excavators

**Material:** Q355B, Q690D, strong reinforcement plate.

**Color:** can be customized or painted according to customer requirements.

**Applicable working conditions:** high-rise building demolition, urban environment demolition, heavy material handling, old building renovation, building interior demolition, etc.

## Zhonghe Machinery Factory Advantages of Three-section Demolition Boom



### The Advantages of our demolition boom excavator:

1. The demolition arm we designed can be completely lowered, and the accessories we carry can be rotated without disassembly. **In the transport state, this arm can also rotate**, while other manufacturers' designs cannot rotate and will hit the track plate.(P1)

2. The opening angle of the demolition arm can be larger, **basically reaching 180 degrees**, allowing the demolition height to be higher.

We have **enlarged the pin of the bucket cylinder and adopted a 90-degree pin** to ensure that the pin is not prone to problems under high-intensity operations(P2)

3. We currently use the best products on the market in terms of pipe design, pipe materials, and joint materials.

We **strictly control the processing requirements**, and must **open grooves for welding and conduct trial assembly** before leaving the factory to ensure precision control.

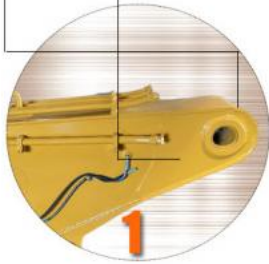
We shortened the distance between the internal ribs to **increase the rigidity of the demolition arm and ensure toughness, but also increased a certain amount of weight**, which improved the quality of the product.

4. Seamless precision steel pipe
5. Q690D for boom's upper and lower cover
6. Adopt 90mm pin to avoid pin breakage
7. The pipeline is hidden to avoid being smashed
8. Hydraulic pipelines section design, convenient for later maintenance



## Details Advantage

- More firmly due to whole plate bending



- Add reinforcement plate at the stress position

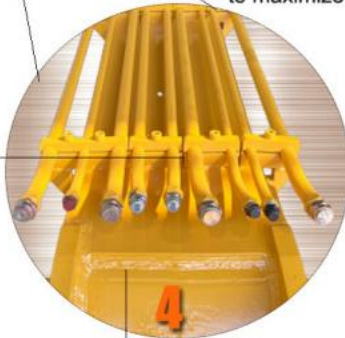
- Adopt 90mm pin to avoid pin breakage



- The opening angle of boom arm can reach 180°



The boom, middle arm and arm are designed in a golden ratio to maximize its effectiveness



- Seamless precision steel pipe

- three layers with four passes welding



- Graphite alloy copper sleeve

- The boom seat sleeve adopts all in one molding process

---

## Product Detail Display



#### Strength reinforcement

With strong reinforcement plate, the whole bending is more solid and lubrication is centralized.



#### Seamless precision steel pipe

Centralized lubrication system. Three layers with four passes welding. The boom seat sleeve adopts all in one molding process.



#### Q690D Materials

Enlarge the bucket cylinder. The pipeline is hidden to avoid being smashed. Adopt 90mm pin to avoid pin breakage.



#### Boom, middle arm arms can be bent to 90 degrees.

Multi-layer reinforcing rib plate at the stress place, more firm, integrated molding. The box has built-in transverse and vertical reinforcement ribs to improve its tensile strength.



#### Fully extended to 180°

The opening angle of boom arm can reach 180°. The boom, middle arm and arm are designed in a golden ratio to maximize its effectiveness.



#### Easy maintenance

Hydraulic pipelines section design, convenient for later maintenance. All products are customized, supporting ODM and OEM customization.

### Excavator Demolition Boom Arm Engineering Case



Excavator demolition arm is a kind of equipment specially designed for demolition engineering, suitable for the following working conditions:

Applicable working conditions

1. **Demolition of high-rise buildings:** The long arm design of the demolition arm can easily reach high places and is suitable for

demolition operations of high-rise buildings.

2. **Demolition in urban environments:** In small or crowded urban environments, the demolition arm can effectively reduce interference with surrounding buildings and facilities.

3. **Precision demolition:** The high precision of the demolition arm can be used for demolition tasks that require precise control, such as the demolition of structural parts.

4. **Heavy object handling:** It can easily carry heavy building materials such as concrete and steel, which is suitable for large-scale demolition projects.

5. **Renovation of old buildings:** It is suitable for partial demolition of old buildings for renovation or reconstruction.

6. **Operation in dangerous areas:** In demolition work that requires safe isolation and away from dangerous areas, the use of demolition arms can reduce the risk of workers.

7. **Demolition inside buildings:** It can be demolished inside buildings and is suitable for demolition of structures such as interior walls and ceilings.

8. **Bridge demolition:** It can be used to demolish bridges or other elevated structures, providing sufficient height and strength.

9. **Emergency demolition:** In post-disaster recovery or other emergency situations, it is suitable for rapid demolition of dangerous structures to ensure safety.

## Some Demolition Attachments With Demolition Boom

### Some Demolition Attachment with Demolition Boom



All demolition attachments and demolition  
boom arms are made in Zhonghe Machinery !!!

### Related building demolition attachments for excavator demolition arms

**Double cylinder shear:** The double cylinder shear adopts a specially made reinforced slewing bearing. The teeth of the slewing bearing are processed with high frequency, so it has better wear resistance and longer service life. This reinforced slewing bearing has a greater load-bearing capacity and can withstand loads in various directions at the same time. It is the one with the largest load-bearing capacity among slewing bearing products of the same level and can be used in harsh working conditions such as high-altitude demolition.

**Rock hammer/breaker hammer:** Suitable for mining, construction, demolition, highways, railways, ships, metallurgy, municipal gardens, etc. The impact energy-enhanced structure design of the breaker hammer; it adopts the optimal design concept, increases the piston and cylinder stroke, and uses the same diameter of the piston and drill rod, so that the breaker hammer and the main machine match better, reasonably utilizes the highest output energy, saves energy, and achieves the highest work efficiency; it is manufactured using high-quality materials and special precision technology.

**Hydraulic pulverizer:** It is suitable for demolition operations such as separating reinforced concrete.

1. Made of Hardox 500, light weight and wear-resistant.
2. The oil cylinder adopts honed tube and imported HALLITE oil seal, with short working cycle and long life.
3. The pin is made of 42CRMO alloy steel with built-in oil channel, high strength and good toughness.
4. The blade is made of wear-resistant alloy steel, resistant to high temperature and deformation.

**Multi crusher/Multi shear:** It is suitable for the demolition of high-rise buildings in the old city renovation and the demolition of abandoned factories, solving the problem of high-altitude operations; at the same time, it prevents the occurrence of safety accidents.

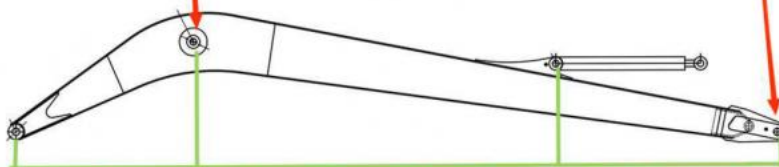
1. The scissor body is made of Hardox steel plate, which ensures maximum strength and best wear resistance;
  2. The oil cylinder is installed in reverse, mainly to protect the oil cylinder rod, avoid damage, and extend the service life of the oil cylinder.
- 

**High precision machine of Zhonghe Machinery Manufacturers**

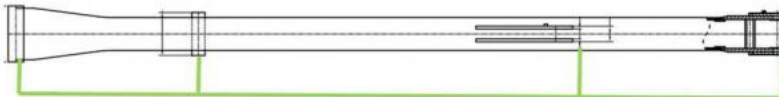
## Double-sided boring lathe



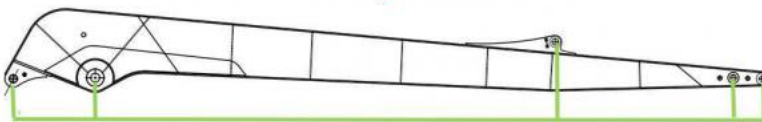
After the excavator boom and arm are assembled, the pins on the boom are drilled to ensure that the pins on the boom are parallel to each other and the cross section of the pin hole is perpendicular to the pin. The double-sided boring machine of the boom makes the hole position more accurate and the quality higher.



Make sure the cross section of the pin hole is perpendicular to the shaft.



Make sure the axis is parallel to the axis



Make sure the cross section of the pin hole is perpendicular to the shaft



Make sure the axis is parallel to the axis

### Large Floor-Standing Double-Sided Boring and Milling Lathe:

**Improved Accuracy and Consistency:** The double-sided boring and milling lathe enhances the precision and uniformity of operations, ensuring consistent results.

**Post-Welding Processing:** After the welding process, the machine performs overall boring, ensuring the parallelism and perpendicularity of shaft holes.

**Primary Applications:** Primarily used for post-weld boring of the boom, small arm, and bucket, ensuring the accuracy and

proper alignment of the boom.

**Simultaneous Boring on Both Sides:** The lathe performs boring on both sides at the same time, guaranteeing identical precision and consistency on both sides.

A large floor-standing double-sided boring and milling lathe is a versatile machine tool designed for heavy-duty machining operations. Its primary functions include:

**Boring:** This involves enlarging or finishing existing holes with precision. The machine can bore holes in large workpieces with high accuracy.

**Milling:** The lathe can also perform milling operations, which involve removing material from the workpiece using rotating cutters. This can include creating slots, grooves, and other complex shapes.

**Turning:** Although primarily a boring and milling machine, some models can also perform turning operations, which involve rotating the workpiece and using cutting tools to shape it.

---

## About Zhonghe Machinery Company Profile:



## Kaiping Zhonghe Machinery Manufacturing Co., Ltd.

Kaiping Zhonghe Machinery Manufacturing Co., Ltd. was established in 2018. It is an enterprise integrating production and trade. It specializes in customizing different types of excavator booms arms and attachments, such as excavator long arms, demolition arms, sliding arms, 2-3 section telescopic arms, tunnel arms, standard/rock buckets, grabs, ripper, etc., which are sold well in more than 60 countries and regions.

The following are our advantages:

1. Covers an area of about 18000 square meters
2. Staff size 120 people.
3. Technical equipment (2 sets of plasma, CNC cutting machines, 3 milling machines, a set of precision floor boring machines, One set of chamfering and beveling machines, two large lathes/drilling machines, a large shot blasting workshop, a stress relief workshop, a large plate rolling machine, and a high -purity mixed gas supply station, etc.)
4. Our company offers customers a comprehensive production line of custom-designed, custom-made, and delivered products.
5. Prompt lead time: 7-25 days
6. Annual production amount 600 sets of excavator booms We adhere to "Merit Quality, Sincerity Management and Customer Satisfaction", honestly greet customers from home and abroad to negotiate and cooperate with us.

---

## CE certification & Utility model patent certificates



Our products have been exported to over 60 countries, utilizing various transportation methods such as sea, land, and air freight. For packaging, we use either wooden crates or stretch film to secure the products. Before shipment, the goods are carefully packaged and then loaded into containers to ensure their safety during transit.

## Packaging & Shipping



## FAQ(Some frequently asked questions):

### Q: Are you a manufacturer?

A: Zhonghe machinery offered a wide range of attachment parts for excavators and dozers. Such as long reach arm, demolition arm, telescopic arm, standard bucket, rock bucket, cleaning bucket, tilting bucket, etc. We know that the perfect combination of high-quality cast steel products and a moderate price is the key to the success.

### Q: What material is used for the demolition arm?

A: Most demolition arms are made of Q355B material. Customers require lighter weight and better quality. We can use Q690D material, but the price will be higher.

### Q.The difference between the demolition arm and the two-stage long reach arm?

A: The maximum angle of the general long reach arm after straightening is 150 degrees, while the angle that the demolition arm can open is about 180 degrees, which can almost be made into a straight line. So under the same length, the demolition arm has a higher demolition height. The two products have different focuses. The long arm focuses on deeper digging depth, and the demolition arm focuses on higher demolition height.

### Q: What are your terms of payment?

A: We prefer T/T (50/50) payment terms, and for trial orders, we recommend using **Ali Credit Insurance** for added security.

Any information, pls contact Ada!!!!

Whatsapp: +86 15322105263

Wechat/Tel: 0086 15322105263  
E-mail: abby@excvatorboomarm.com



**Jiangmen Kaiping Zhonghe Machinery Manufacturing Co., Ltd**



+86 13822325403



aria@excavatorlongarm.com



excavatorlongarm.com

9 Huancui West Road, Quishanhu New Area, Kaiping City, Guangdong Province, China