



Excavator Long Reach Attachment Boom Arm 18m 16m Yellow Color High Effective

Our Product Introduction

for more products please visit us on excavatorlongarm.com

Basic Information

- Place of Origin: China
- Brand Name: ZH
- Certification: CE
- Model Number: JCB001
- Minimum Order Quantity: 1 SET
- Price: \$5142/set
- Packaging Details: Stretch film packaging
- Delivery Time: 20-30 working day
- Payment Terms: T/T
- Supply Ability: 600

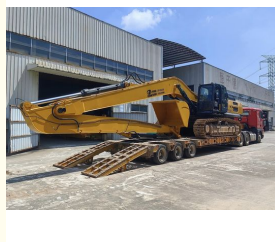
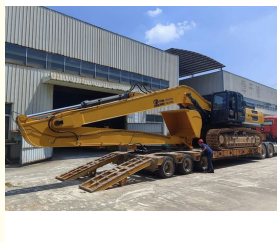


Product Specification

- Condition: New, 100% new, New Long Reach Boom & Arm
- Warranty: 6 Months
- After-sales Service Provided: Online Support, Video Technical Support
- Bucket Capacity: 0.9m³, 0.4-0.5CBM, 0.2-6m³
- Machine Weight: 6-120T
- Color: Customer's Request
- Application: Crawler Excavator
- Material: Q345B+Q690D
- Type: Standard/Long Reach/Rock
- Maximum Length: 7-35m Long Reach Boom & Arm
- Highlight: Excavator Long Reach Attachment Boom, Excavator Long Reach Attachment Arm, 18m Excavator Long Reach Arm



More Images

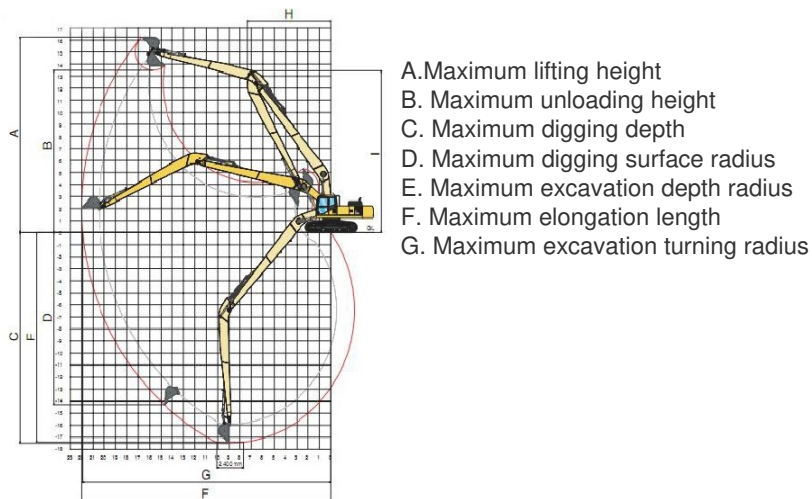


Product Description

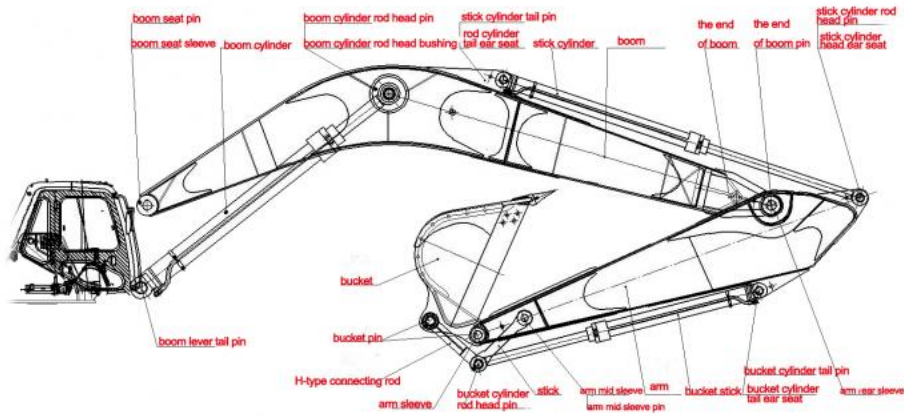
Unloading At The Dock Best Long Reach Boom Attachments Excavator Long Reach Boom Dealer for Xugong XE550



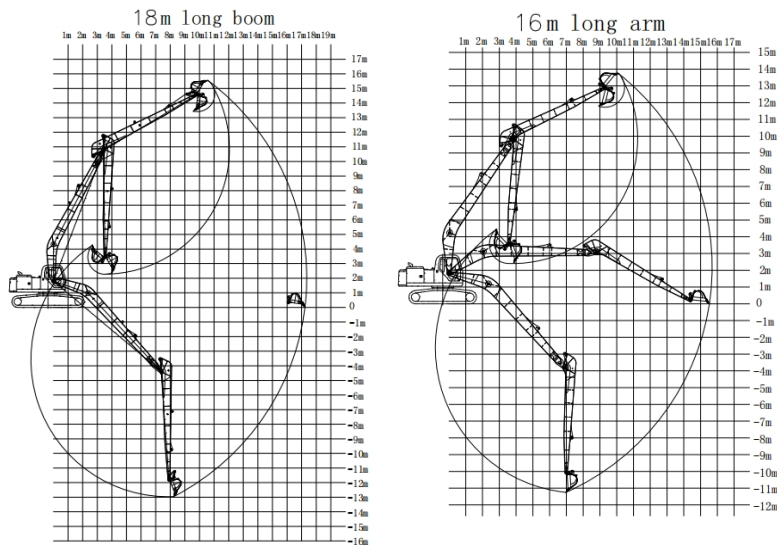
Excavator long arm is one of the most popular products produced in our factory. It is designed to enhance the reach and versatility of excavators, making it suitable for various applications such as deep excavation, demolition, and material handling. The long arm is engineered for durability and performance, catering to the demands of construction and heavy-duty operations. Its popularity stems from its ability to improve efficiency and effectiveness in a wide range of projects.



Standard Boom Arm Components



Simulation diagram of 18m and 16m long arms



Regular dimensions for long reach boom arm

| Excavator (ton) | Total Length (mm) | Max Radius (mm) | Max Depth (mm) | Max Unload Height (cbm) | Max Height (mm) | Bucket Capacity (mm) |
|-----------------|-------------------|-----------------|----------------|-------------------------|-----------------|----------------------|
| 11-15T | 13000 | 11200 | 9000 | 7550 | 9000 | 0.15-0.3 |
| 20-25T | 15400 | 14500 | 11300 | 10400 | 12600 | 0.4-0.6 |
| 20-30T | 18000 | 17300 | 13000 | 11800 | 14000 | 0.4-0.7 |
| 35-40T | 20000 | 19200 | 14900 | 12900 | 15200 | 0.4-0.7 |
| 40-45T | 22000 | 21300 | 16000 | 14000 | 17000 | 0.5-1 |
| 40-50T | 24000 | 21300 | 17900 | 15200 | 18100 | 0.5-1.1 |

Main functions and features of the extension boom:

- Expanding operation range:** compared with the standard digging arm, the extension arm greatly increases the operation range of the excavator, which can go deeper or deeper into the higher area.
- Wide range of application:** It is suitable for various engineering operations such as river cleaning, mountain excavation and high-rise building demolition.
- Enhanced stability:** Although the length of the excavator arm is lengthened, the special design ensures the balance and stability of the equipment, which guarantees efficient and safe operation.
- Applicable to a variety of excavator attachments:** the extended arm can be matched with buckets, hydraulic shears, grapples and other attachments to meet different operational needs.
- Durable:** Extension arms are usually made of high-strength materials, with good wear resistance and durability, and can adapt to the complex and harsh working environment.

Zhonghe Factory Advantages of Long Reach Boom/Long Arm:





01

- * Three layers with four passes welding
- * Two layers three passes welding

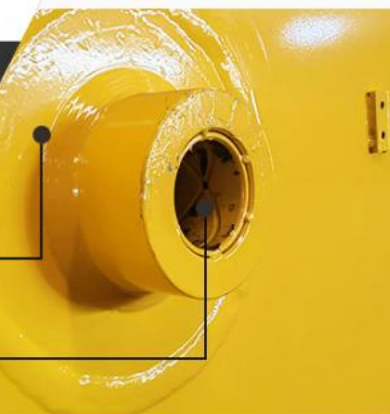


02

- * The ear seat is built with reinforced vertical bar plates
- * Pin holes are boring after welding

03

- * The middle sleeve of the boom adopts an integral forming process
- * Reinforced 45# steel for boom middle sleeve



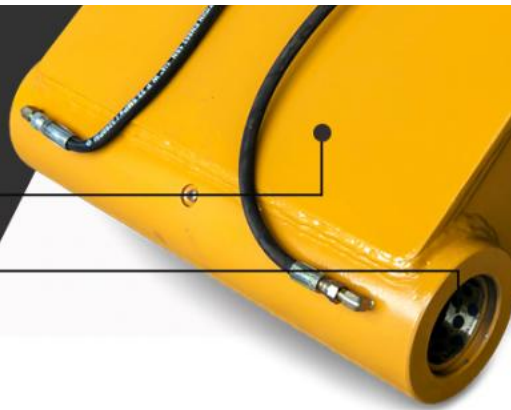
04

- * Seamless precision steel pipe
- * Adopt high quality Ningbo connectors



05

- * Strengthen the inner part of the box and the boom seat sleeve with inclined tendons
- * Graphite alloy copper sleeve



Internal structure of the boom



Built-in reinforced steel plate, evenly welded to prevent cracking.

Prevent product deformation



Increase boom load-bearing capacity

Our (mechanical beveling)



Other factories (manual bevel)



VS

What is the purpose of a long arm plate bevel?

The purpose of a long arm plate bevel is to facilitate the welding process, ensuring that the weld is stronger, more reliable, and penetrates the entire thickness of the material. Here are the main reasons to use a bevel on a long arm plate:

Improves weld penetration: As you mentioned, the depth of fusion of a welding machine is usually less than the thickness of the plate. The bevel allows the welding arc to penetrate further into the material, achieving better penetration and ensuring that the weld fills the entire joint.

Prevents weld cracking: Without a bevel, the weld may not penetrate fully, leaving weak spots in the weld, which can cause cracking under stress. A proper bevel ensures that the weld is continuous and free of defects that can cause future failures.

Reduces welding time: A beveled edge can reduce the amount of material that needs to be melted, which can reduce the time it takes to complete a weld.

Improves weld quality: A bevel provides a consistent edge for the welder, which can result in a more even, better looking weld.

Mechanical bevel vs. manual bevel: Mechanically cut bevels are generally more precise than manual methods. This precision is critical to ensuring a quality weld. Mechanically cut bevels provide a cleaner, more uniform edge that allows for easier and more consistent welding.

Shops that use mechanical bevels typically produce a higher quality, more consistent product than manual bevels. The mechanical process reduces human error and provides a more reliable bevel, which is critical for structural integrity, especially in heavy equipment such as excavator long boom plates.

We make bevels mechanically, while other factories make bevels manually (as shown in the picture)

Comparison Between Other Products And Ours

1. The end of boom comparison

ours



Our upper and lower covers are directly pressed on the end of boom before welding, so the welding strength will be better.

others



Other factories produce end of boom and cover plate directly connected, which is prone to welding problems and more prone to cracking.

VS

ours



Our factory designed it so that a round steel is connected to the plate, and the quality of the round steel at this position is more reliable.

others



The factory bends the entire plate without reinforcing this position, so the chance of cracking is higher.

VS

2. Design of the arm

ours



We thicken the plate of the rear cover of our forearm (the connection between the upper end of boom and the arm) to ensure that this position is not easy to crack.

others



The factory did not perform thickening treatment at this location, and directly used the whole plate.

VS

3. Design of the boom sleeve

ours



others



VS



Our upper arm middle sleeve is processed as a whole, which is more solid and beautiful.



The designs of other factories are assembled and welded without secondary processing, and the overall appearance is not beautiful enough.

4. Design of the rear seat plate of the arm

ours



Our plate is thickened because this position is connected to the boom cylinder and is the most stressed part of the arm, so we thicken the plate to avoid cracking at this position.

others



Other manufacturers do not perform reinforcement and thickening treatment on this location. After the excavator has been working for a long time, this location is prone to quality problems.

VS

5. Design of arm side panel

ours



The thick plate and thin plate of our arm side plate are directly connected by diagonal connection. This design can effectively avoid excessive stress concentration and cracking at the interface.

others



Other manufacturers use straight-line docking at this location, which is not reasonable enough, with excessively concentrated stress and prone to cracking.

VS

6. Butt joint design of arm upper cover

ours



The upper cover of our arm is generally not butt-jointed. Even if it is butt-jointed, we will stick a butt-jointed plate inside the cover to ensure that the welding can be fully melted. Our butt-jointed position is generally selected in the middle of the ear seat, so that there will be no problems.

others



Other manufacturers dock at other locations, which may cause cracking at the docking interface later.

VS

7. Front end design of earm

ours



others



VS



The side panel at the front end of our arm is thickened. The force at this position is relatively large, so thickening of this position is very necessary.



Other manufacturers do not perform thickening treatment at this location.

Working Scene of Excavator Long Reach Boom Arm



For canal cleaning



For marine project



Road construction



For dock unloading



Engineering construction



For earthwork



Main features of extended arm excavator:

Wider operating range: Compared with standard excavator arms, extended arms can dig deeper or farther, suitable for large areas or high-altitude operations.

Wide application: Extended arms are widely used in river dredging, mountain restoration, high-rise building demolition and other fields.

Strong stability: Although the extended arm expands the excavation range, its design maintains the balance and operational stability of the equipment, which is particularly suitable for large-scale operations.

Adapt to complex working conditions: In underwater operations or difficult demolition projects, extended arms can achieve precise operations and adapt to various complex environments.

Customizable design: Extended arms can usually be customized according to project requirements, such as arm length, strength, required special accessories, etc.

Some Pictures----Long Arm for Hitachi 1200

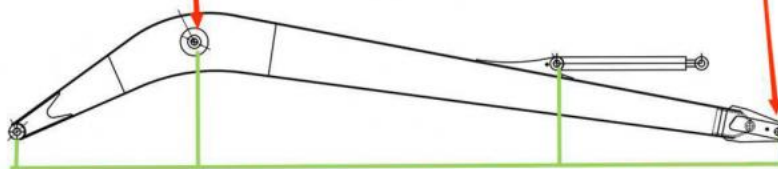


High precision machine of Zhonghe Machinery Manufacturers

Double-sided boring lathe



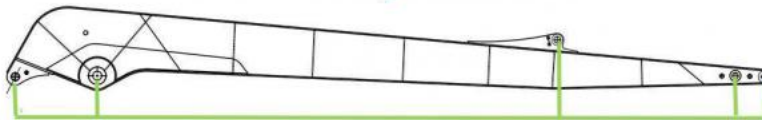
After the excavator boom and arm are assembled, the pins on the boom are drilled to ensure that the pins on the boom are parallel to each other and the cross section of the pin hole is perpendicular to the pin. The double-sided boring machine of the boom makes the hole position more accurate and the quality higher.



Make sure the cross section of the pin hole is perpendicular to the shaft.



Make sure the axis is parallel to the axis



Make sure the cross section of the pin hole is perpendicular to the shaft



Make sure the axis is parallel to the axis

Large Floor-Standing Double-Sided Boring and Milling Lathe:

Improved Accuracy and Consistency: The double-sided boring and milling lathe enhances the precision and uniformity of operations, ensuring consistent results.

Post-Welding Processing: After the welding process, the machine performs overall boring, ensuring the parallelism and perpendicularity of shaft holes.

Primary Applications: Primarily used for post-weld boring of the boom, small arm, and bucket, ensuring the accuracy and

proper alignment of the boom.

Simultaneous Boring on Both Sides: The lathe performs boring on both sides at the same time, guaranteeing identical precision and consistency on both sides.

About Zhonghe Machinery Company Profile:

Established in 2018, Kaiping Zhonghe Machinery Co., Ltd. is a production and trading company specializing in the production of customized excavator booms and attachments. Located in Cuishan Lake New District, Kaiping City, Jiangmen City, Guangdong Province, China, our company has a 21,000 square meter steel structure plant equipped with advanced precision machinery. Our team consists of **more than 100 skilled professionals**, including 50 welders with **more than 7 years of experience**, 30 senior designers, and a high-tech R&D team with more than 10 years of experience in professional customized solutions and more than 100 technical patents. With a **strong production system (6+ years of quality and cost control)** and a professional service team, we are able to produce up to **800 excavator booms** per year.



CE certification & Utility model patent certificates



Our products have been exported to over 60 countries, utilizing various transportation methods such as sea, land, and air freight. For packaging, we use either wooden crates or stretch film to secure the products. Before shipment, the goods are carefully packaged and then loaded into containers to ensure their safety during transit.

Packaging & Shipping



FAQ(Some frequently asked questions):

Q: Are you a manufacturer?

A: Zhonghe machinery offered a wide range of attachment parts for excavators and dozers. Such as long reach arm, demolition arm, telescopic arm, standard bucket, rock bucket, cleaning bucket, tilting bucket, etc. We know that the perfect combination of high-quality cast steel products and a moderate price is the key to the success.

Q: What material is the excavator long arm made of?

A: Shaogang Q355B, Shaogang's material has the advantages of good toughness, high welding performance, and not easy to crack. Q355B has good welding performance and can be processed at room temperature. The standard arm material of the host manufacturer is also Q355B, which is easier to purchase on the market and the subsequent maintenance cost is also simple. If the customer's working conditions are bad, we will also use Q690 material, the long arm will be made lighter and more efficient

Q: Why choose Zhonghe over other companies?

A: We offer a highly skilled production and design team that delivers high-quality, customized solutions tailored to each customer's needs. Our commitment to precision and customer service has earned us a strong reputation in China, with annual sales consistently ranking among the top in the industry.

Q: What are your terms of payment?

A: We prefer **T/T (50/50)** payment terms, and for trial orders, we recommend using **Ali Credit Insurance** for added security.

Any information, pls contact Sophia!

this is my contact way directly

Sophia W/A: +86 18127591702

Mail: sophia@excavatorboomarm.com



Jiangmen Kaiping Zhonghe Machinery Manufacturing Co., Ltd



+86 13822325403



aria@excavatorboomarm.com



excavatorlongarm.com

9 Huancui West Road, Cuishanhu New Area, Kaiping City, Guangdong Province, China