



6 Ton-36 Ton Excavator Mounted Clamshell Telescopic Arm For 15M Digging Depth

Our Product Introduction

for more products please visit us on excavatorlongarm.com

Basic Information

- Place of Origin: China Guangdong
- Brand Name: Zhonghe Machinery
- Certification: CE, patent, ISO
- Model Number: LDSSS0024
- Minimum Order Quantity: 1 set / piece
- Price: USD 200-USD 6999
- Packaging Details: bubble, wooden cases
- Delivery Time: 7-30 working days
- Payment Terms: T/T, L/C
- Supply Ability: 7 sets per week



Product Specification

- Key Word: Excavator Telescopic Arm
- Excavator Accessories: Bucket And Other Accessories
- Digging Depth: 6m-16m
- Apply To: 6 Ton - 36 Ton Excavator
- Warranty: 6 Months
- Material: Q690D / HG785 / Q355B Lighter And Stronger
- Situation: New
- Quality: Premium
- Highlight: 15M Digging Depth Telescopic Arm, Excavator Mounted Clamshell Telescopic Arm



More Images



Product Description

High Effective Telescopic Boom Excavator Telescopic Boom Excavator with Clamshell Bucket Standard Bucket

Here is our product catalog: [2024 Zhonghe Machinery--Product Catalog.pdf](#)

Quick Detail of one set of telescopic arm for excavator:

Minimal Maintenance: The double seal cylinder design we utilize significantly extends the lifespan of the excavator telescopic boom and its arm.

Extended Service Life and High Efficiency: Areas subjected to high stress are reinforced, and the telescopic arm undergoes thorough testing before delivery, ensuring quality and reliability.

Tube Material: Constructed from Q690D / HG785, the materials used are both stronger and lighter, contributing to the telescopic arm's durability and efficiency.

Increased Depth: The two-section design allows the telescopic arm to extend and retract, enabling it to reach greater depths and providing a wider operational range.



Brief Description of Excavator Telescopic Boom:

The Excavator Telescopic Boom features a two-section design that allows it to be fitted with either a standard bucket or a clamshell bucket. Telescopic arm's extendable and retractable functionality is vital for performing a range of tasks effectively. The boom arm is crucial for the excavator's overall performance, and the reinforced long arm enhances durability, ensuring improved working efficiency throughout its operational life.

Telescopic arm's Models are as below:

One set of telescopic arm with two-section includes: One telescopic boom, one Bucket, one Bucket Cylinder, One set of Lickage, other accessories

Suitable Excavator Model	Maximum Digging Depth
6T	6m
20-36T	14m
24-36T	15m
25-36T	16m

Kindly send your excavator model directly to us, suitable length of recommended telescopic arm will be available.

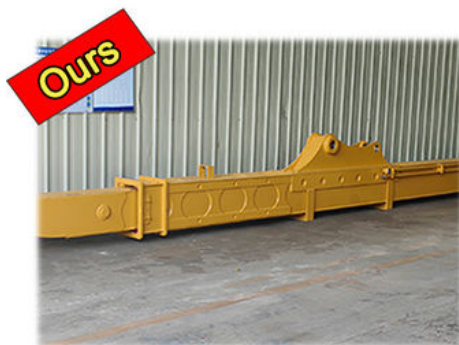
Whatsapp: [0086 13822325403](#)



More details of excavator telescopic arm:

Telescopic arm with Robust structure prolonger the service life-span

To enhance its longevity, the bearing components feature multi-layer reinforcement, making the telescopic arm resistant to cracking and bending. This design ensures a longer service life for the telescopic arm, which plays a critical role in your construction projects and various tasks.



**Multi-layer reinforcement
of stress-bearing parts**



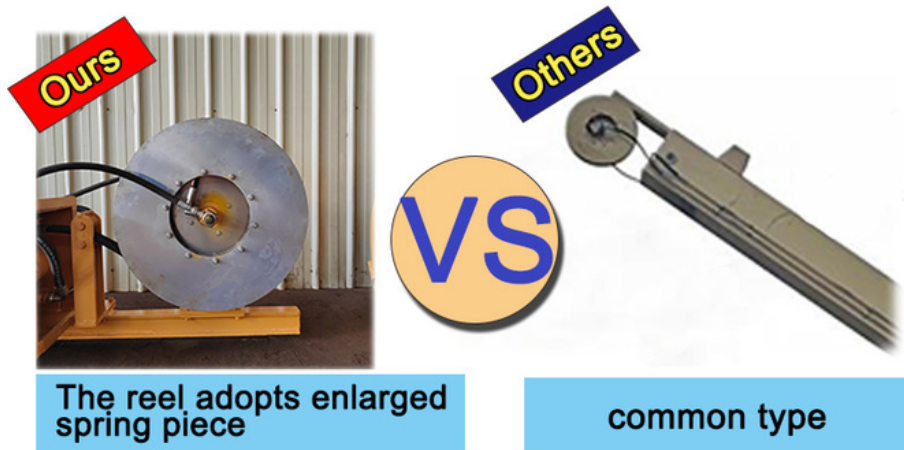
without reinformant

Prolong Long service life

The service lifespan is a crucial consideration in the design and production of a telescopic arm. Both the excavator arm and boom are meticulously crafted to suit the working conditions of the telescopic arm. The design of the excavator sliding boom arm prioritizes durability for extended use.

The reel features an enlarged spring component for enhanced performance.

A robust 22-ton bucket cylinder is utilized to ensure strength and reliability.



Easy Maintenance

The excavator boom arm features a long cylinder and extended tube(main material: Q690D / HG785).

A lubrication system for the sliders facilitates easy greasing.

The bucket cylinder of telescopic arm can be replaced without the need to dismantle the arm.

Preventing Oil Leakage in the Telescopic Arm

The cylinders are essential for the functioning of the telescopic arm, which operates through extending and retracting. Our design of telescopic arm incorporates high-quality cylinders that ensure effective performance.

The telescopic cylinder is equipped with double oil seals for added protection.

The bucket cylinder hose is built-in to prevent oil leaks caused by hose vibrations.

Hydraulic hoses are constructed with a four-layer steel wire reinforcement for enhanced durability.

Feedback from Clients



from Jonson:
the telescopic boom is suitable for digging caisson. excellent performance.



from Ryon:
deeper digging depth. work effectively. nice service



WIA: +86 13822325403



from Ton:
Very excellent telescopic boom. on my excavator suitably. very good job



from Cris:
safe and balanced. premium excavator boom. perfect

Production Detail of telescopic arm:

- * Comprehensive Testing
- * Precision Machines
- * Full Experienced Staffs who have many years of experiences, our staffs know every step of designing and producing, we know every details, the quality is high guaranteed



Production Advantages



Panel is cut by
CNC plasma
machine with
less deformation



《02

Tolerance within
5-10um, ensure
the accuracy of
hole



03》

GMAW-Gas
Metal Arc
Welding



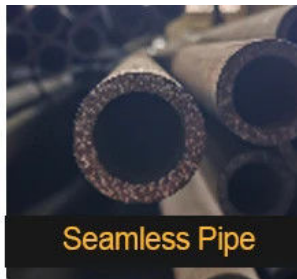
《04

Environmentally
friendly verified
spraying room.
Professional and
beautiful paint
finish





Certified Steel



Seamless Pipe



40MuCr Pins



Graphite Sleeve

Our Team Show:

We have more than 2000 staffs who have been working in this field many years. Every quarter we will update our products. Clients' feedback is very important, we value clients' feedback. Currently, we have received thousands of millions of good feedback from clients.



Design Department



Production Department



Sales Department

Certifications:



Whatsapp: [0086 13822325403](https://wa.me/008613822325403)



9 Huancui West Road, Cuishanhu New Area, Kaiping City, Guangdong Province, China