



Customized Excavator Extension Arm Excavator Long Boom For CAT Komatsu Sumitomo

Our Product Introduction

for more products please visit us on excavatorlongarm.com

Basic Information

- Place of Origin: China
- Brand Name: ZH
- Certification: CE
- Model Number: JCB001
- Minimum Order Quantity: 1 SET
- Price: \$5142/set
- Packaging Details: Stretch film packaging
- Delivery Time: 20-30 working day
- Payment Terms: T/T
- Supply Ability: 600

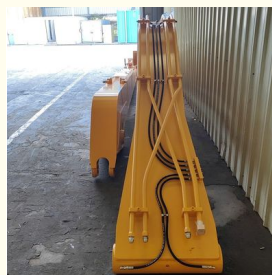
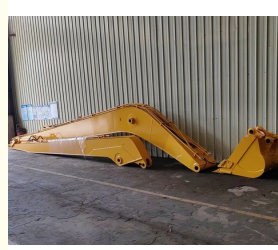


Product Specification

- Condition: New, 100% new, New Long Reach Boom & Arm
- Warranty: 6 Months
- After-sales Service Provided: Online Support, Video Technical Support
- Bucket Capacity: 0.9m³, 0.4-0.5CBM, 0.2-6m³
- Machine Weight: 6-120T
- Color: Customer's Request
- Application: Crawler Excavator
- Material: Q345B+Q690D
- Type: Standard/Long Reach/Rock
- Maximum Length: 7-35m Long Reach Boom & Arm
- Highlight: Customized Excavator Extension Arm, Customized Excavator Long Boom, Excavator Long Boom For CAT



More Images

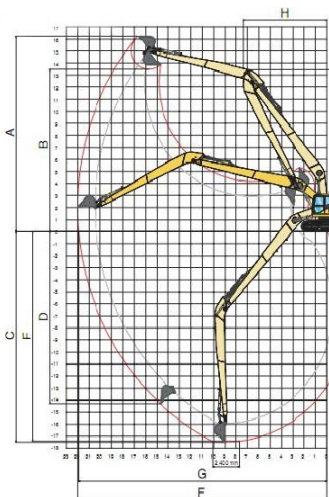


Product Description

Excavator Extension Arm Excavator Long Boom Factory Long Reach Boom Wholesale for CAT Komatsu Sumitomo

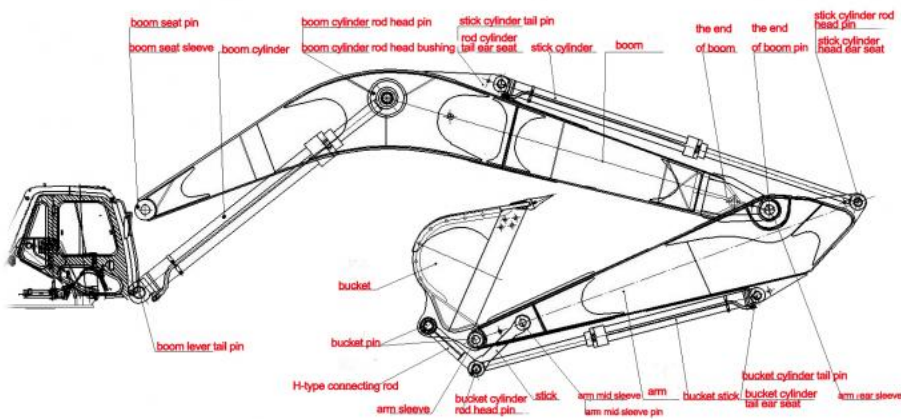


We are capable of producing **6 to 35-meter long booms** for excavators ranging from **6 to 120 tons**. These booms are designed to provide extended reach and enhanced versatility, catering to a wide range of excavation and demolition tasks for both small and large-scale projects. (Zhonghe Machinery Factory)

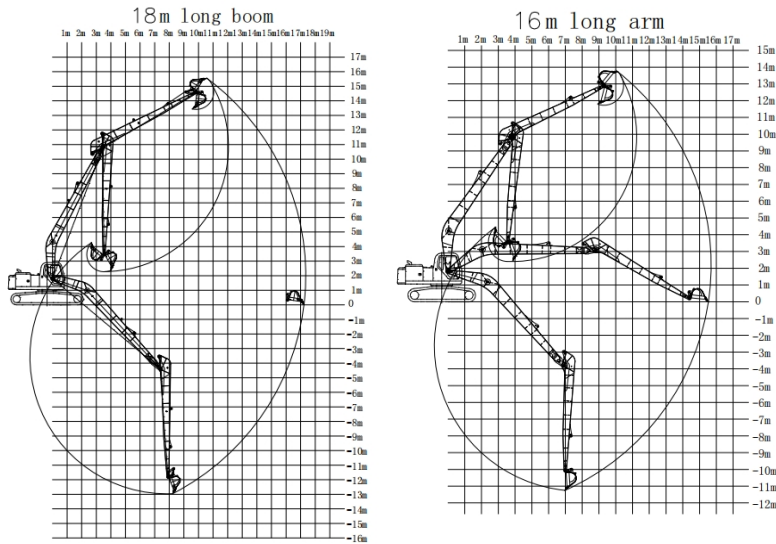


- A. Maximum lifting height
- B. Maximum unloading height
- C. Maximum digging depth
- D. Maximum digging surface radius
- E. Maximum excavation depth radius
- F. Maximum elongation length
- G. Maximum excavation turning radius

Standard Boom Arm Components



Simulation diagram of 18m and 16m long arms



Regular dimensions for long reach boom arm

Excavator (ton)	Total Length (mm)	Max Radius (mm)	Max Depth (mm)	Max Unload Height (cbm)	Max Height (mm)	Bucket Capacity (mm)
11-15T	13000	11200	9000	7550	9000	0.15-0.3
20-25T	15400	14500	11300	10400	12600	0.4-0.6
20-30T	18000	17300	13000	11800	14000	0.4-0.7
35-40T	20000	19200	14900	12900	15200	0.4-0.7
40-45T	22000	21300	16000	14000	17000	0.5-1
40-50T	24000	21300	17900	15200	18100	0.5-1.1

Zhonghe Machinery Long Arm:

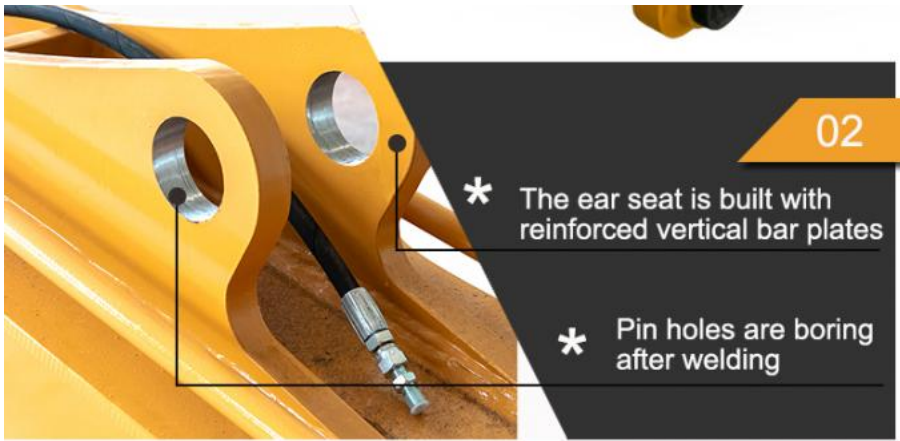
1. Because our long arms are customized and designed according to the size of the excavator, they are suitable for all excavator brands, such as Hitachi, Carter, Sumitomo, Kobelco, Kubota, Komatsu, Kato, Doosan, Liebherr, Lingong, Longgong, etc.
2. Applicable tonnage and length of long arms: suitable for 6-120 tons excavators, 7-35 meters long arms
3. Support ODM, OEM, such as color, size, logo, etc. can be customized
4. Material: Q355B, Q690D, Q550, etc.

Zhonghe Factory Advantages of Long Reach Boom/Long Arm:



01

- * Three layers with four passes welding
- * Two layers three passes welding



02

* The ear seat is built with reinforced vertical bar plates

* Pin holes are boring after welding



03

* The middle sleeve of the boom adopts an integral forming process

* Reinforced 45# steel for boom middle sleeve



04

* Seamless precision steel pipe

* Adopt high quality Ningbo connectors



05

* Strengthen the inner part of the box and the boom seat sleeve with inclined tendons

* Graphite alloy copper sleeve

Internal structure of the boom



Built-in reinforced steel plate, evenly welded to prevent cracking.

Prevent product deformation



Increase boom load-bearing capacity

Our (mechanical beveling)



Other factories (manual bevel)



VS

What is the purpose of a long arm plate bevel?

Welding machines commonly used in the industry have a depth of fusion of only 3mm thick, and our long arm plate is at least 8mm thick. Our long arm plates are at least 8mm thick, and without a bevel, the welder cannot penetrate the entire weld, resulting in poor weld results and problems such as cracking of the weld at a later stage. We make bevels mechanically, while other factories make bevels manually (as shown in the picture)

Comparison Between Other Products And Ours

1. The end of boom comparison

ours



Our upper and lower covers are directly pressed on the end of boom before welding, so the welding strength will be better.

others



Other factories produce end of boom and cover plate directly connected, which is prone to welding problems and more prone to cracking.

ours



others



VS



VS



Our factory designed it so that a round steel is connected to the plate, and the quality of the round steel at this position is more reliable.

The factory bends the entire plate without reinforcing this position, so the chance of cracking is higher.

2. Design of the arm

ours



VS

others



We thicken the plate of the rear cover of our forearm (the connection between the upper end of boom and the arm) to ensure that this position is not easy to crack.

The factory did not perform thickening treatment at this location, and directly used the whole plate.

3. Design of the boom sleeve

ours



VS

others



Our upper arm middle sleeve is processed as a whole, which is more solid and beautiful.

The designs of other factories are assembled and welded without secondary processing, and the overall appearance is not beautiful enough.

4. Design of the rear seat plate of the arm

ours



VS

others



Our plate is thickened because this position is connected to the boom cylinder and is the most stressed part of the arm, so we thicken the plate to avoid cracking at this position.

Other manufacturers do not perform reinforcement and thickening treatment on this location. After the excavator has been working for a long time, this location is prone to quality problems.

5. Design of arm side panel

063

5. Design of arm side panel

ours



VS

others



The thick plate and thin plate of our arm side plate are directly connected by diagonal connection. This design can effectively avoid excessive stress concentration and cracking at the interface.

Other manufacturers use straight-line docking at this location, which is not reasonable enough, with excessively concentrated stress and prone to cracking.

6. Butt joint design of arm upper cover

ours



VS

others



The upper cover of our arm is generally not butt-jointed. Even if it is butt-jointed, we will stick a butt-jointed plate inside the cover to ensure that the welding can be fully melted. Our butt-jointed position is generally selected in the middle of the ear seat, so that there will be no problems.

Other manufacturers dock at other locations, which may cause cracking at the docking interface later.

7. Front end design of earm

ours



VS

others



The side panel at the front end of our arm is thickened. The force at this position is relatively large, so thickening of this position is very necessary.

Other manufacturers do not perform thickening treatment at this location.

Working Scene of Excavator Long Reach Boom Arm



For canal cleaning



For marine project



Road construction



For dock unloading



Engineering construction



For earthwork



Main features of extended excavator arms:

Wider operating range: Compared with standard excavator arms, extended arms can dig deeper or farther, suitable for large areas or high-altitude operations.

Wide application: Extended arms are widely used in river dredging, mountain restoration, high-rise building demolition and other fields.

Strong stability: Although the extended arm expands the excavation range, its design maintains the balance and operational stability of the equipment, which is particularly suitable for large-scale operations.

Adapt to complex working conditions: In underwater operations or difficult demolition projects, extended arms can achieve precise operations and adapt to various complex environments.

Customizable design: Extended arms can usually be customized according to project requirements, such as arm length, strength, required special accessories, etc.

Some Pictures----Long Arm for Hitachi 1200



Key Features of the 30m Long-Reach Boom for Hitachi 1200:

Extended Reach: With a 30-meter length, this boom provides extensive horizontal and vertical reach, allowing the Hitachi 1200 to operate in large-scale projects such as river dredging, slope finishing, or demolition of tall structures.

Durability: Designed for heavy-duty use, the boom is built from high-strength materials to withstand the stress of extended operations while maintaining the stability of the machine.

Compatibility: Specifically designed to fit the Hitachi 1200, the long-reach boom maintains optimal machine balance and hydraulic performance.

Increased Efficiency: The added reach reduces the need to reposition the excavator, improving worksite efficiency and reducing operational time.

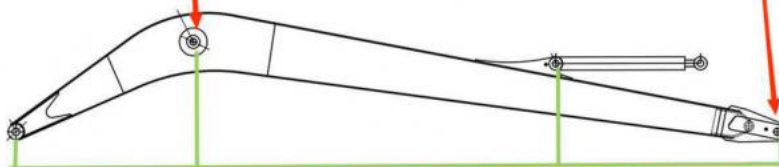
Customizable Attachments: Depending on the project, various attachments such as buckets, hydraulic shears, or grabs can be fitted to the boom for specific tasks.

High precision machine of Zhonghe Machinery Manufacturers

Double-sided boring lathe



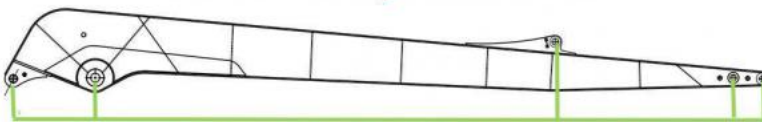
After the excavator boom and arm are assembled, the pins on the boom are drilled to ensure that the pins on the boom are parallel to each other and the cross section of the pin hole is perpendicular to the pin. The double-sided boring machine of the boom makes the hole position more accurate and the quality higher.



Make sure the cross section of the pin hole is perpendicular to the shaft.



Make sure the axis is parallel to the axis



Make sure the cross section of the pin hole is perpendicular to the shaft



Make sure the axis is parallel to the axis

Large Floor-Standing Double-Sided Boring and Milling Lathe:

Improved Accuracy and Consistency: The double-sided boring and milling lathe enhances the precision and uniformity of operations, ensuring consistent results.

Post-Welding Processing: After the welding process, the machine performs overall boring, ensuring the parallelism and perpendicularity of shaft holes.

Primary Applications: Primarily used for post-weld boring of the boom, small arm, and bucket, ensuring the accuracy and

proper alignment of the boom.

Simultaneous Boring on Both Sides: The lathe performs boring on both sides at the same time, guaranteeing identical precision and consistency on both sides.

About Zhonghe Machinery Company Profile:

Kaiping Zhonghe Machinery Co., Ltd., founded in 2018, is a company that integrates both manufacturing and trading, with a focus on producing customized excavator boom arms and attachments. Located in Cuishanhu New District, Kaiping City, Jiangmen, Guangdong Province, China, the company operates a 21,000 square meter steel-structured facility equipped with advanced precision machinery. Our team consists of more than 100 skilled professionals, including 50 welders with over 7 years of experience, 30 senior designers, and a high-tech R&D team with over 10 years of expertise in custom solutions and holding 100+ technical patents. With a robust production system (6+ years of quality and cost control) and a dedicated service team, we are capable of producing up to 800 excavator boom arms annually.



CE certification & Utility model patent certificates



Our products have been exported to over 60 countries, utilizing various transportation methods such as sea, land, and air freight. For packaging, we use either wooden crates or stretch film to secure the products. Before shipment, the goods are carefully packaged and then loaded into containers to ensure their safety during transit.

Packaging & Shipping



FAQ(Some frequently asked questions):

Q: Are you a manufacturer?

A: Zhonghe machinery offered a wide range of attachment parts for excavators and dozers. Such as long reach arm, demolition arm, telescopic arm, standard bucket, rock bucket, cleaning bucket, tilting bucket, etc. We know that the perfect combination of high-quality cast steel products and a moderate price is the key to the success.

Q: What material is the excavator long arm made of?

A: Shaogang Q355B, Shaogang's material has the advantages of good toughness, high welding performance, and not easy to crack. Q355B has good welding performance and can be processed at room temperature. The standard arm material of the host manufacturer is also Q355B, which is easier to purchase on the market and the subsequent maintenance cost is also simple. If the customer's working conditions are bad, we will also use Q690 material, the long arm will be made lighter and more efficient

Q: Why choose Zhonghe over other companies?

A: We offer a highly skilled production and design team that delivers high-quality, customized solutions tailored to each customer's needs. Our commitment to precision and customer service has earned us a strong reputation in China, with annual sales consistently ranking among the top in the industry.

Q: What are your terms of payment?

A: We prefer T/T (50/50) payment terms, and for trial orders, we recommend using **Ali Credit Insurance** for added security.

this is my contact way directly

Sophia W/A: +86 18127591702

Mail: sophia@excavatorboomarm.com



Jiangmen Kaiping Zhonghe Machinery Manufacturing Co., Ltd



+86 13822325403



aria@excavatorboomarm.com



excavatorlongarm.com

9 Huancui West Road, Cuishanhu New Area, Kaiping City, Guangdong Province, China