



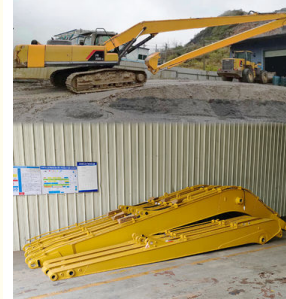
## 6-35M Excavator Extension Arm Heavy Duty Long Boom for High Reach Excavators

Our Product Introduction

for more products please visit us on excavatorlongarm.com

### Basic Information

- Place of Origin: China
- Brand Name: ZH
- Certification: CE
- Model Number: JCB001
- Minimum Order Quantity: 1 SET
- Price: \$5142/set
- Packaging Details: Stretch film packaging
- Delivery Time: 20-30 working day
- Payment Terms: T/T
- Supply Ability: 600

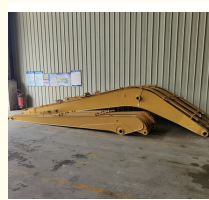
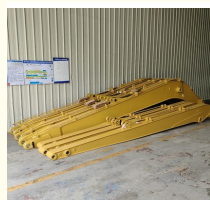


### Product Specification

- Condition: New, 100% new, New Long Reach Boom & Arm
- Warranty: 6 Months
- After-sales Service Provided: Online Support, Video Technical Support
- Bucket Capacity: 0.9m<sup>3</sup>, 0.4-0.5CBM, 0.2-6m<sup>3</sup>
- Machine Weight: 6-120T
- Color: Customer's Request
- Application: Crawler Excavator
- Material: Q345B+Q690D
- Type: Standard/Long Reach/Rock
- Maximum Length: 7-35m Long Reach Boom & Arm
- Highlight: High Reach Excavator Extension Arm, Excavators Heavy Duty Long Boom



### More Images



### Product Description

#### 6-35M Excavator Extension Arm Heavy Duty Long Boom for Excavators Excavator Boom Extension for High Reach

An **excavator long-reach boom** is a specialized attachment designed for tasks that require extended reach, such as deep excavation, dredging, and demolition of high structures. Long-reach booms increase the operating range of an excavator, allowing it to access areas that standard booms cannot.

##### Key Features of an Excavator Long-Reach Boom:

**Extended Range:** These booms significantly extend the horizontal and vertical reach of the excavator, making it ideal for projects like slope finishing, dredging, and deep excavation.

**High-Precision Work:** The extended reach allows for precision in tasks like demolition and underwater work, where access and accuracy are critical.

**Stability and Durability:** Long-reach booms are typically made from heavy-duty materials and engineered to maintain balance and stability, even when operating at full extension.

**Customizable Options:** Many manufacturers offer customization for length, material strength, and attachment types, depending on the specific project needs.

Our Product Introduction

- 
- Standard Boom Arm Components**
- boom seat pin  
boom seat sleeve  
boom cylinder  
boom cylinder rod head pin  
boom cylinder rod head bushing  
jib cylinder tail pin  
tail cylinder  
tail seat sleeve  
jib cylinder  
boom  
the end of boom  
the end of boom pin  
stick cylinder rod head pin  
stick cylinder rod head bushing  
bucket  
bucket pins  
H-type connecting rod  
arm sleeve  
bucket cylinder rod head pin  
stick  
arm rod sleeve  
arm  
arm mid sleeve pin  
bucket stick  
bucket cylinder tail seat  
arm rear sleeve  
boom lever tail pin

Excavator (ton)	Total Length (mm)	Max Radius (mm)	Max Depth (mm)	Max Unload Height (cbm)	Max Height (mm)	Bucket Capacity (mm)
11-15T	13000	11200	9000	7550	9000	0.15-0.3
20-25T	15400	14500	11300	10400	12600	0.4-0.6
20-30T	18000	17300	13000	11800	14000	0.4-0.7
35-40T	20000	19200	14900	12900	15200	0.4-0.7
40-45T	22000	21300	16000	14000	17000	0.5-1
40-50T	24000	21300	17900	15200	18100	0.5-1.1

1. Because our long arms are customized and designed according to the size of the excavator, they are suitable for all excavator brands, such as Hitachi, Carter, Sumitomo, Kobelco, Kubota, Komatsu, Kato, Doosan, Liebherr, Lingong, Longgong, etc.
2. Applicable tonnage and length of long arms: suitable for 6-120 tons excavators, 7-35 meters long arms
3. Support ODM, OEM, such as color, size, logo, etc. can be customized
4. Material: Q355B, Q690D, Q550, etc.

### Zhonghe Factory Advantages of Long Reach Boom/Long Arm:



The grease pipe is centrally lubricated and made of high-quality copper pipe, which is durable and not easy to burst.

The end of boom uses a strong reinforcement plate to increase strength and extend service life.



The boom base uses a graphite alloy copper sleeve to improve durability and performance and act as a lubricant.



Four layers and five passes of welding, and superb welding technology.



International cold-drawn seamless steel pipes are used and purchased in accordance with national standards to ensure accuracy and seamless performance.



Three layers and four passes welding

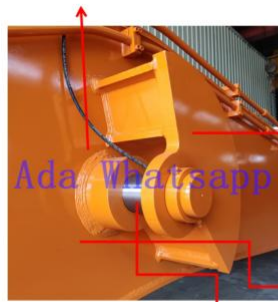
Multi-layer welding, smooth welding, the boom and arms are not easy to crack.

There are reinforcement plates at this position of the upper and lower covers to prevent the bending position from being stressed and cracked.

Ada Whatsapp:0086 15322105263

The plate at this location is very thick and is a strong reinforcement plate to ensure that this location is not prone to cracking.

Multi-layer welding, smooth welds, not prone to cracking



Protection function: when working, stones flying can protect the pin and boom.

Ada Whatsapp:0086 15322105263

Built-in strong reinforcement plate to prevent cracking.

Pin sleeve reinforced and thickened.



1. These 4 main weld passes, they are all double layers We ensure the welding melts to the whole plate.
2. It can make the pass more firm and less likely to crack. 3. Here you can see the pass is full and very smooth. Our welding worker is skillful and have more than 10 years working experience, very professional.
4. Seamless precision steel pipe
5. Three layers and four passes welding
6. Lubrication concentrate system. There are 5 lubrication pipes, all concentrated here, making it easy and convenient for operators to add lubricating oil.



We use double-layer reinforcement plates at the boom base, making our long arms more durable and stronger than other suppliers.

1. The parts prone to cracking have been reinforced, and the box inside the ear seat has been reinforced.
2. The connection between the end of boom and the box has been reinforced.
3. The ear seat of the arm has been reinforced and the design mechanism has been changed.

The bucket cylinder is enlarged, with large flow, strong force and more power.

Ada Whatsapp:0086 15322105263

The boring process is carried out by a gantry boring machine, and the hole diameter eccentricity is 100% consistent.  
镗孔工序采用龙门镗床进行，孔径偏心率100%一致。

It uses international standard connectors, which are interchangeable with the original ones. They are easy to find in the market and more convenient to replace.

High-pressure hose, strong wear resistance, high reliability, not easy to explode.

The main material of the steel sleeve is 45# steel, which is carburized after heat treatment. It has good wear resistance and self-lubricating function. It is easy to purchase and saves maintenance costs.

Strong reinforcement plate is used to extend the service life of the arm.

### Internal structure of the boom

Built-in reinforced steel plate, evenly welded to prevent cracking.

Prevent product deformation

Increase boom load-bearing capacity

Our (mechanical beveling)



VS

Other factories (manual bevel)



### What is the purpose of a long arm plate bevel?

Welding machines commonly used in the industry have a depth of fusion of only 3mm thick, and our long arm plate is at least 8mm thick. Our long arm plates are at least 8mm thick, and without a bevel, the welder cannot penetrate the entire weld, resulting in poor weld results and problems such as cracking of the weld at a later stage. We make bevels mechanically, while other factories make bevels manually (as shown in the picture)

### Comparison Between Other Products And Ours



## 1. The end of boom comparison



Our upper and lower covers are directly pressed on the end of boom before welding, so the welding strength will be better.

VS



Other factories produce end of boom and cover plate directly connected, which is prone to welding problems and more prone to cracking.



Our factory designed it so that a round steel is connected to the plate, and the quality of the round steel at this position is more reliable.

VS



The factory bends the entire plate without reinforcing this position, so the chance of cracking is higher.

## 2. Design of the arm



We thicken the plate of the rear cover of our forearm (the connection between the upper end of boom and the arm) to ensure that this position is not easy to crack.

VS



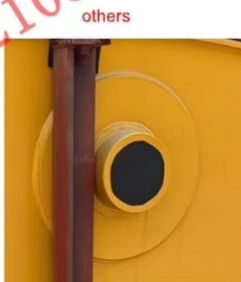
The factory did not perform thickening treatment at this location, and directly used the whole plate.

## 3. Design of the boom sleeve



Our upper arm middle sleeve is processed as a whole, which is more solid and beautiful.

VS



The designs of other factories are assembled and welded without secondary processing, and the overall appearance is not beautiful enough.

#### 4. Design of the rear seat plate of the arm

ours



VS

others



Our plate is thickened because this position is connected to the boom cylinder and is the most stressed part of the arm, so we thicken the plate to avoid cracking at this position.

Other manufacturers do not perform reinforcement and thickening treatment on this location. After the excavator has been working for a long time, this location is prone to quality problems.

#### 5. Design of arm side panel

ours



VS

others



The thick plate and thin plate of our arm side panel are directly connected by diagonal connection. This design can effectively avoid excessive stress concentration and cracking at the interface.

Other manufacturers use straight-line docking at this location, which is not reasonable enough, with excessively concentrated stress and prone to cracking.

#### 6. Butt joint design of arm upper cover

ours



VS

others



The upper cover of our arm is generally not butt-jointed. Even if it is butt-jointed, we will stick a butt-jointed plate inside the cover to ensure that the welding can be fully melted. Our butt-jointed position is generally selected in the middle of the ear seat, so that there will be no problems.

Other manufacturers dock at other locations, which may cause cracking at the docking interface later.

#### 7. Front end design of earm

ours



VS

others



The side panel at the front end of our arm is thickened. The force at this position is relatively large, so thickening of this position is very necessary.

Other manufacturers do not perform thickening treatment at this location.

Working Scene of Excavator Long Reach Boom Arm



For canal cleaning



For marine project



Road construction



For dock unloading



Engineering construction



For earthwork



**The excavator extended arm is mainly suitable for the following special working conditions:**

**Slope operation:**

When performing hillside maintenance or slope protection projects, the extended arm can cover a larger working range, reduce the movement of the excavator on the slope, and reduce the risk of operation.

**Earthwork:**

In some large earthwork projects, the extended arm can complete large-scale excavation and transfer work without frequently moving the excavator, improving work efficiency.

**Long-distance grabbing and handling:**

The extended arm is suitable for some operations that require long-distance grabbing or handling, such as loading and unloading goods at the dock, long-distance tree planting, and even waste disposal.

In general, the extended arm is suitable for scenes that require large-scale operations, high-altitude or deep operations, and greatly improves safety in dangerous working conditions.

---

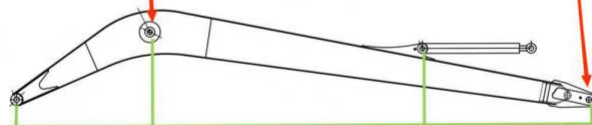
**High precision machine of Zhonghe Machinery Manufacturers**



## Double-sided boring lathe



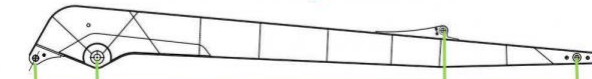
After the excavator boom and arm are assembled, the pins on the boom are drilled to ensure that the pins on the boom are parallel to each other and the cross section of the pin hole is perpendicular to the pin. The double-sided boring machine of the boom makes the hole position more accurate and the quality higher.



Make sure the cross section of the pin hole is perpendicular to the shaft.



Make sure the axis is parallel to the axis



Make sure the cross section of the pin hole is perpendicular to the shaft



Make sure the axis is parallel to the axis

### Large floor-standing double-sided boring and milling lathe:

**Accuracy and Consistency Improvement:** Double-sided boring and milling machines enhance the precision and uniformity of operations.

**Post-Welding Processing:** After welding is completed, the machine bores the overall hole, ensuring the shaft hole's parallelism and verticality.

**Key Responsibility:** It is primarily used for post-welding boring of large and small arms and buckets, ensuring the accuracy of the arm.

**Simultaneous Boring on Both Sides:** The double-sided boring machine performs boring on both sides at the same time, guaranteeing consistent accuracy on both sides.

### About Zhonghe Machinery Company Profile:

Kaiping Zhonghe Machinery Co., Ltd. established in 2018, it is a combination of manufacturing and trading, specializing in customizing different kinds of excavator boom arms and attachments. We are located in Cuishanhu New District, Kaiping city, Jiangmen City, Guangdong Province, China. We boast a 21000m<sup>3</sup> steel structure workshop with a large number of high precision processing equipment and a strong and cohesive team of over 100 experienced technical staff, 50 welding workers with over 7 years experience, 30 senior designers, and a high-tech R&D team (10+ years on customization, 100+ technical patents), strict production system (6+ years quality control and cost control) and warm-hearted service team. Our annual output of various types of excavator boom arms can reach up to 800 sets.





## CE certification & Utility model patent certificates



Our products have been sold to more than 60 countries, and our transportation methods include sea transportation, land transportation, and air transportation. Our packaging is wooden box packaging or stretch film packaging. The goods will be packed before shipment and then loaded into the container to ensure the safety of the goods.

## Packaging & Shipping



## FAQ(Some frequently asked questions):

### Q: Are you a manufacturer?

A: Zhonghe machinery offered a wide range of attachment parts for excavators and dozers. Such as long reach arm, demolition arm, telescopic arm, standard bucket, rock bucket, cleaning bucket, tilting bucket, etc. We know that the perfect combination of high-quality cast steel products and a moderate price is the key to the success.

### Q: Why choose Zhonghe over any other companies?

A: We have a professional production team and design team to provide each customer with high-quality and personalized customer service to ensure correctness, so we have good reputation in China, and our annual sales are among the best in our country.

### Q: What are your terms of payment?

A: We prefer T/T (50/50) through Ali Credit Insurance as a trial order.

### Q: What material is the excavator long arm made of?

A: Shaogang Q355B, Shaogang's material has the advantages of good toughness, high welding performance, and not easy to crack. Q355B has good welding performance and can be processed at room temperature. The standard arm material of the host manufacturer is also Q355B, which is easier to purchase on the market and the subsequent maintenance cost is also simple. If the customer's working conditions are bad, we will also use Q690 material, the long arm will be made lighter and more efficient

[Any information, pls contact](#)

Whatsapp: +86 18127591702  
Wechat/Tel: 0086 18127591702  
E-mail: sophia@excavatorboomarm.com



**Jiangmen Kaiping Zhonghe Machinery Manufacturing Co., Ltd**



+86 13822325403



aria@excavatorboomarm.com



excavatorlongarm.com

9 Huancui West Road, Cuishanhu New Area, Kaiping City, Guangdong Province, China