



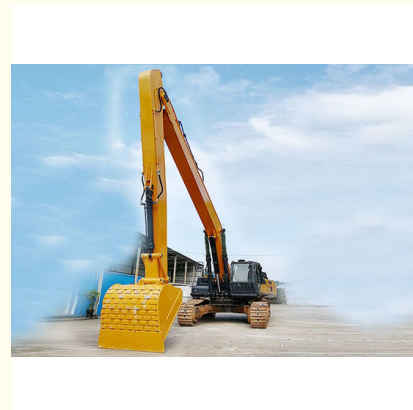
Q690D Excavator Long Reach Boom With Bucket Cylinder For Unload Sand

Our Product Introduction

for more products please visit us on excavatorlongarm.com

Basic Information

- Place of Origin: China
- Brand Name: Zhonghe Machinery
- Certification: CE, patent, ISO
- Model Number: LRB066
- Minimum Order Quantity: 1 set / piece
- Price: USD 130.00-USD9990.00
- Packaging Details: bubble / wooden cases
- Delivery Time: 7-20/works
- Payment Terms: T/T, L/C
- Supply Ability: 7 sets per week

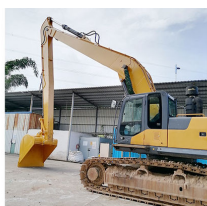


Product Specification

- Features: High Effective And Longer Life-span
- Material: Shaogang Q355B, Q690D Or Others As You Request
- Bucket Cylinder: Available
- Suitable Excavator: 6 Ton 20 Ton 25 Ton 55 Ton Excavator And Above
- Bucket: Available
- Condition: New
- Warranty: 6 Months
- Key Word: Long Reach Boom Excavator
- Highlight: **Excavator Long Reach Boom With Bucket, Excavator Long Boom For Unload Sand**



More Images



Product Description

Strong Welding Excavator Long Arm Excavator Long Boom Arm for Sale for Unloading Sand Soil Gravel

click here to have our product catalog: [2024 Zhonghe Machinery--Product Catalog.pdf](#)

Quick Details:

Strong Welding: Shaogang Q355B, better welding performance, not easy cracking

Excellent Cylinders: The bucket cylinders we chose is the better one.

Longer life-span: Strong welding ensure longer life-span, every plate is well beveled before welding. By doing so, the welding is good enough to weld two plates together.

High strength: the reasonable internal transverse reinforcement make sure that the arm and boom is strong



Brief instruction of long reach boom excavator:

Long arm excavators are specialized excavator of heavy machinery designed to improve excavation and material handling, especially in some specific working condition like jetties. Excavator long arm are equipped with extended boom arms, enabling operators to reach greater distances and dig deeper without the need for frequent repositioning.

Key Features

Extended Reach: The long arm design allows operators to access cargo from farther away, making it particularly effective for unloading materials from ships or barges at jetties.

Versatility: These excavators can handle a variety of materials, including sand, gravel, and silt, making them suitable for different loading and unloading tasks.

Efficiency: Excavator long boom arm for sale capability to operate from a distance reduces the need for repositioning, leading to faster unloading times and enhanced productivity.

Durable Construction: Many long arm excavators are made from high-quality materials, such as Shaogang Q355B steel, ensuring long-lasting durability and resistance to wear, even in tough conditions.



Specifications:

One set of long boom excavator for sale includes: Big boom, small arm, one bucket, one bucket cylinder, pins, other excavator accessories

(The excavator accessories will be listed clear on the quotation, please contact Aria for any details. [Whatsapp: 0086 13822325403](https://www.whatsapp.com/message/008613822325403))

Excavator Model(m)	Counterweight (ton)	Bucket capacity (cbm)	Boom(m)	
		Bucket cylinder	Arm(m)	
30-36T	0	0.6	11	Length(m) 19-20
		20T	9	
37-39T	0	0.6	11	
		20T	9	
40-47T	0	1	11	21-22
		25T	9	
25-28T	3.5T	0.4	12	
		12T	10	
30-33T	2.5T	0.4	12	23-24
		12T	10	
35-39T	1.5T	0.6	12	
		20T	10	
40-47T	0	0.8	12	
		20T	10	
30-35T	3.5T	0.4	13	
		12T	11	
35-39T	2T	0.4	13	
		12T	11	
40-47T	0	0.6	13	
		20T	11	

Welcome to send your excavator model to us, suitable length will be recommend.

Excellent design of long excavator boom:

- * Improved wear resistance: The boom end sleeve we use is Graphite alloy copper sleeve, other sleeve we use is steel sleeves
- * Strong and not easy cracking welding: Every plates are beveled before welding which enhances the welding strong, not easy cracking
- * Using Seamless pipelines as long boom excavator's pipelines-- there is no scrap in the pipelines
- * Strong Welding Using better welding wire--Jinqiao Welding wire
- * Strong Enough Rational internal ribs arrangement--ensure the long reach boom is strong enough and longer life-span



1. Three layers with four passes welding
2. Two layers three passes



1. Seamless precision steel
2. Adopt high quality Ningbo connectors



The middle sleeve of the boom adopts an integral forming process
Reinforced 45# steel for boom middle sleeve



1. Pin holes are boring after welding
2. The ear seat is built with reinforced vertical bar plates



1. Strengthen the inner part of the box and the boom seat sleeve with inclined tendons
2. Graphite alloy copper sleeve



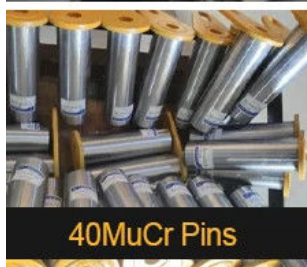
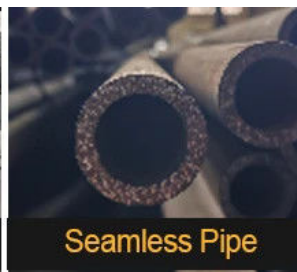
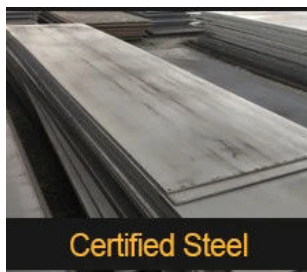
Steel sleeve

Graphite alloy copper sleeve

W/A: 0086 13822325403



Professional Production Process:



Production Advantages

01 >>

Panel is cut by CNC plasma machine with less deformation



<< 02

Tolerance within



5-10um, ensure the accuracy of hole

03 >>

GMAW-Gas Metal Arc Welding

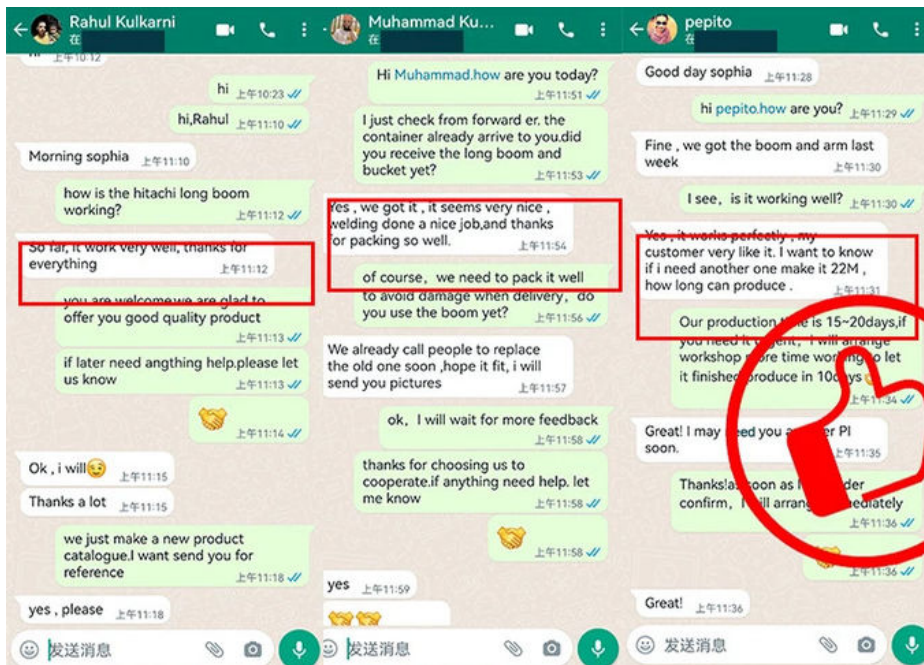


<< 04

Environmentally friendly verified spraying room. Professional and beautiful paint finish

Certifications:

Positive client feedback indicates that the long boom arm excavator for sale is of high quality and offers a longer lifespan compared to competitors. This excavator is well-balanced and safe, making it highly suitable for digging and significantly helping construction projects.



Welcome to contact for a big discount.
<https://wa.me/+8613822325403>



Jiangmen Kaiping Zhonghe Machinery Manufacturing Co., Ltd



+86 13822325403



aria@excavatorboomarm.com



excavatorlongarm.com

9 Huancui West Road, Cuishanhu New Area, Kaiping City, Guangdong Province, China