



OEM 20-85 Ton Excavator Hydraulic pile arm With 160 Degree Max Pile Angle

Our Product Introduction

for more products please visit us on excavatorlongarm.com

Basic Information

- Place of Origin: China
- Brand Name: Zhonghe Machinery
- Certification: Patent, ISO
- Model Number: DZB025
- Minimum Order Quantity: 1 piece / set
- Price: USD 199-6999
- Packaging Details: Bubble / wooden cases
- Delivery Time: 5 days-20 days
- Payment Terms: T/T, L/C, or others as you request
- Supply Ability: 5 sets per week

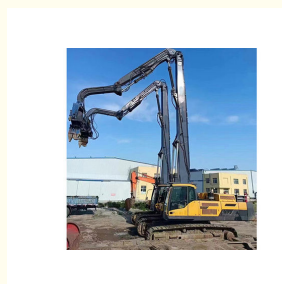


Product Specification

- Max Pile Angle: About 160 Degrees
- Max Pile Lifting Height: 13.5m, 15.8m, 19m, 24 M
- Power Source: Hydraulic
- Suitable Excavator Model: 20 Tons - 85m
- Condition: New
- Material: Q355B Or Others As You Request
- Welding: Strong Welding
- Warranty: 6 Months
- Highlight: Excavator Hydraulic Pile Driving Arm, 85 Ton Excavator Hydraulic Pile Arm, OEM Excavator Hydraulic Pile Arm



More Images



Product Description

20-85 Ton Hydraulic Pile Driver With 160 Degree Max Pile Angle Excavator Pile Driving Arm

Instruction of Excavator Pile Arm:

Excavator Pile Driving Arm is a helpful machine used in construction work. Frequently used in piling steel piles, cement piles, digging holes. The front attachment can be an auger attachment / pile hammer.



Specifications of one set of excavator pile arm:

* One big boom / one small arm / other attachments

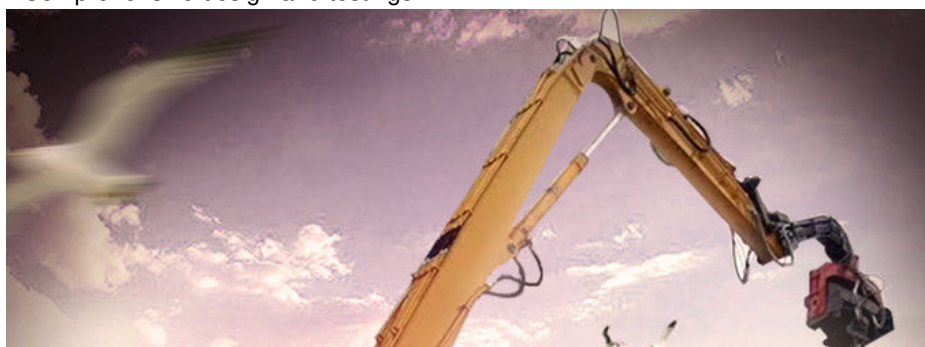
Excavator Model(ton)	Section (m)	Total Length (m)
20-24T	8	11-12
	3	
25-28T	8.5	12.5-13
	3.5	
30-38T	9.7	13.5
	3.8	
36-39T	10.5	15
	4.5	
40-47	9.8	13-14.2
	4	
40-50	11	15-15.8
	4.8	

45-52	11.5	16.5-16.8
	5.3	
47-52	12.2	18-19
	6	
49-52	14	21-22
	7	
65-85	15.2	24m
	8.8	



Production Details of excavator pile arm:

- * Precision Production Machines
- * Staffs who have many years of experienced
- * Comprehensive design and testings





PILE DRIVING BOOM

ZHONGDE MACHINERY



Overall Quality

- * Q355B Material
- * Centralized lubrication system

Boom Base

- * Graphite alloy copper sleeve
- * The boom seat sleeve adopts all in one molding process

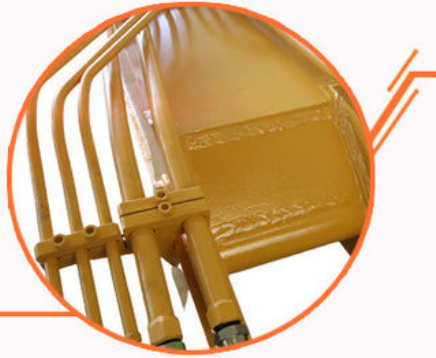


Precision Pipe

- * Seamless precision steel pipe
- * Hydraulic pipelines section design, convenient for later maintenance

Welding process

- *Four layers five passes welding
- *High-quality Ningbo connectors



160°

Open Angle

- *The angle between boom and arm can reach 160°
- *Comparing with the same length pile driving arm, ours can pile higher.

Advantages of Excavator Pile Arm

- * Premium Materials: Shaogang Q355B, Q690D, Ningbo Connectors, Seamless Pipelines etc
- * Pile Higher: The angle of arm and boom is about 160 degree which make sure piling higher than other peers
- * Strong enough and longer life-span: Multi-layer reinforcing rib plate at the stress place, more firm, integrated molding

The boom seat sleeve adopts all in one molding process ensure the safety.



Production Advantages



01 >>

Panel is cut by
CNC plasma
machine with
less deformation



<< 02

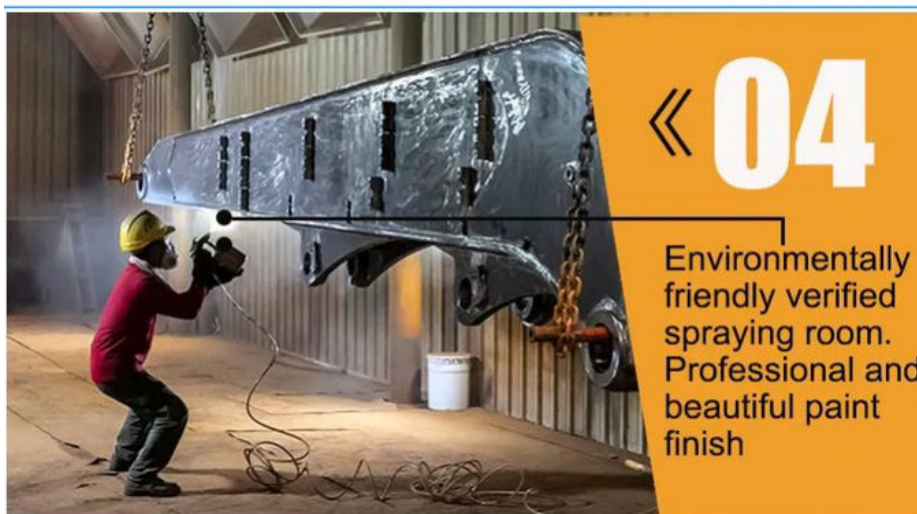
Tolerance within
5-10um, ensure
the accuracy of
hole





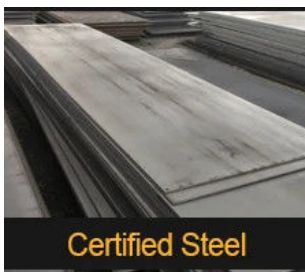
03 >>

GMAW-Gas
Metal Arc
Welding

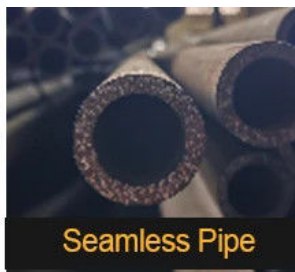


<< 04

Environmentally
friendly verified
spraying room.
Professional and
beautiful paint
finish



Certified Steel



Seamless Pipe



40MuCr Pins



Graphite Sleeve

Fairs we attended

Zhonghe Machinery Fairs



2023

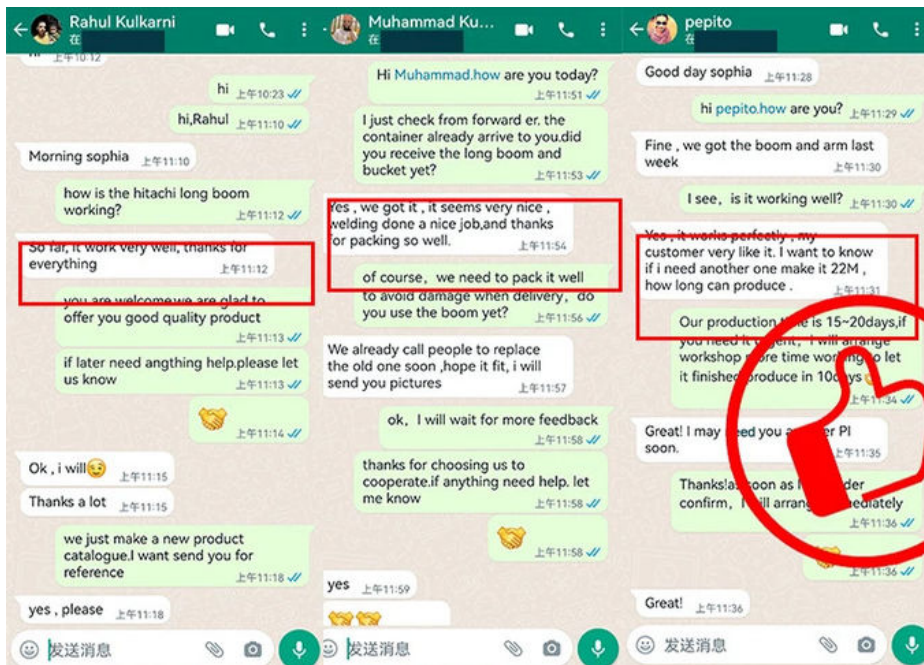
Changsha International
Construction Equipment
Exhibition

2024

The 4th Guangxi Second-
hand Construction
Machinery Industry
Summit



Certifications



[Welcome to contact for a big discount!](#)



Jiangmen Kaiping Zhonghe Machinery Manufacturing Co., Ltd



+86 13822325403



aria@excavatorboomarm.com



excavatorlongarm.com

9 Huancui West Road, Cuishanhu New Area, Kaiping City, Guangdong Province, China