



3 Sections 0.4-2.5cbm Bucket Capacity Telescopic Excavator Dipper Arm BS900E

Our Product Introduction

for more products please visit us on excavatorlongarm.com

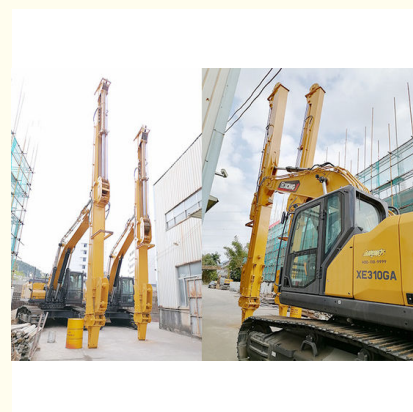
Basic Information

- Place of Origin: China
- Brand Name: Zhonghe Machinery
- Certification: Patents
- Model Number: SSB089
- Minimum Order Quantity: 1 piece / set
- Packaging Details: Bubble / wooden cases
- Delivery Time: 7 days-20 days
- Payment Terms: T/T, L/C, or others as you request



Product Specification

- Welding: Strong
- Bucket Capacity: 0.4cbm, 0.6cbm, 1.5cbm, 2.2cbm, 2.5cbm
- Model: SSB089
- Condition: New
- Material: BS900E (ligher And Stronger)
- Number Of Sections: 3 Sections
- Warranty: 6 Months
- Compatibility: Fits Various Brand Of Excavators



More Images



Product Description

Product Description:

Made from BS900E material, this telescopic dipper arm is both lighter and stronger than other models on the market. It features three sections that can extend to reach longer distances, making it perfect for excavation tasks that require digging deeper into the ground. The Excavator Telescopic Boom Telescopic Arm is the perfect tool for any construction site. It is easy to use and can be attached to your excavator in just a few simple steps. The telescopic design allows you to adjust the length of the arm for different excavation tasks, making it a versatile and reliable tool for any job.

This excavator attachment comes with a 6-month warranty, ensuring that you get the most out of your investment. So whether you are working on a large construction project or digging a trench for a new pipeline, the Telescopic Dipper Arm is the perfect tool for the job.

Features:

Product Features:

Premium Material: The excavator attachment is made of BS900E, a lighter and stronger material, that has a longer lifespan and is less prone to cracking.

Deeper Digging Depth: With a depth reach of up to 25m, 30m, and 32m, this attachment allows for deeper and more efficient digging.

Compatibility: This excavator attachment is suitable for various brands of excavators, providing versatility and flexibility.

Compatible with Multiple Attachments: This attachment is compatible with various attachments, including clamshell buckets, standard buckets, Orang Peel Grab, and other grabs.

Pulley: The pulley on this attachment is made of MC steel, which is as hard as regular steel, but is lighter and more wear-resistant. The enlarged wheel diameter can withstand greater loads.

Bearings: The excavator attachment uses high-speed heavy-load bearings, with larger diameters to withstand greater loads.

Wire Rope: Multi-strand wire rope is used to ensure the attachment can bear greater tension and impact force, for improved durability and performance.

The excavator attachment features premium quality material, BS900E. This material is lighter and stronger, making it more durable and less prone to cracking. It has a longer lifespan, ensuring that it can withstand rough environmental conditions encountered during excavation activities. The digging depth of this attachment is impressive, with a reach of up to 25m, 30m, and 32m. This feature ensures that the excavator attachment can perform deeper and more efficient digging activities, leading to better and faster results. Notably, this excavator attachment is compatible with various brands of excavators, providing excellent versatility to its users. Additionally, the attachment can work seamlessly with different excavator attachments, including clamshell buckets, standard buckets, Orang Peel Grab, and other grabs. This feature means you will only need one attachment to handle multiple tasks. The pulley on this attachment is designed with MC steel, which has the same hardness as regular steel but is lighter and more wear-resistant. Additionally, the wheel diameter is enlarged to handle increased loads. This feature helps to reduce downtime due to maintenance and increases productivity. The excavator attachment also boasts high-speed and heavy-load bearings, with larger diameters to ensure they can withstand more substantial loads. And finally, the multi-strand wire rope used in this attachment ensures that it can bear greater tension and impact force. This feature provides increased durability and performance, making the attachment an ideal choice for a variety of excavation activities.

Applications:

Applications:

Suitable for digging a deep basement

Grabbing Sand, Soil, Silt, etc

There are various applications that can benefit from the use of this device. One such application is that it is suitable for digging a deep basement. With its robust construction and powerful digging capabilities, it can excavate deep into the ground to create the necessary space for a basement foundation. In addition to its excavating abilities, this device is also well-suited for grabbing and moving materials such as sand, soil, and silt. Whether you are looking to clear a construction site or transport soil to a different location, this device can provide the necessary strength and precision to get the job done efficiently. Overall, this device offers a versatile solution that can be adapted to various applications and scenarios. So whether you are working on a large construction project or simply need to move some materials around your property, this device can provide the necessary capabilities to ensure a successful outcome.

Support and Services:

- Product installation guidance and training for operators and maintenance staff
- Troubleshooting and repair assistance to identify and resolve any issues or malfunctions
- Regular maintenance and inspection services to prevent potential problems and ensure proper functioning
- Replacement parts and accessories to accommodate various applications and needs
- Technical documentation and manuals to provide comprehensive information and instructions for safe and effective use of our product

Packing and Shipping:

Product Packaging:
Telescopic Dipper Arm
Instruction Manual
Protective Packaging
Shipping Information:
Shipping Weight: 15 lbs
Shipping Dimensions: 48" x 12" x 12"
Shipping Carrier: UPS

FAQ:

Q: What is the brand name of this telescopic dipper arm?

A: The brand name of this product is Zhonghe Machinery.

Q: What is the model number of this telescopic dipper arm?

A: The model number of this product is SSB089.

Q: Where is this telescopic dipper arm made?

A: This product is made in China.

Q: What certifications does this telescopic dipper arm have?

A: This product has patents certifications.

Q: What are the minimum order quantity and packaging details of this telescopic dipper arm?

A: The minimum order quantity for this product is 1 piece/set, and it is packaged with bubble/wooden cases.

Q: What are the delivery time and payment terms for this telescopic dipper arm?

A: The delivery time for this product is between 7 and 20 days, depending on your location and order quantity. We accept payment through T/T, L/C, or other methods as requested.



Jiangmen Kaiping Zhonghe Machinery Manufacturing Co., Ltd



+86 13822325403



aria@excavatorlongarm.com



excavatorlongarm.com

9 Huancui West Road, Cuishanhu New Area, Kaiping City, Guangdong Province, China