



Q690D Long Reach Excavator Arm And Boom For Unload Sand enhance excavation

Our Product Introduction

for more products please visit us on excavatorlongarm.com

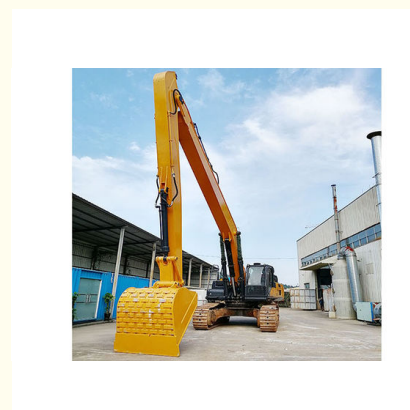
Basic Information

- Place of Origin: China
- Brand Name: Zhonghe Machinery
- Certification: CE, patent, ISO
- Model Number: LRB066
- Minimum Order Quantity: 1 set / piece
- Price: USD 130.00-USD9990.00
- Packaging Details: bubble / wooden cases
- Delivery Time: 7-20/works
- Payment Terms: T/T, L/C
- Supply Ability: 7 sets per week



Product Specification

- Material: Shaogang Q355B, Q690D Or Others As You Request
- Bucket Cylinder: Available
- Suitable Excavator: 6 Ton 20 Ton 25 Ton 55 Ton Excavator And Above
- Bucket: Available
- Condition: New
- Warranty: 6 Months
- Highlight: **Q690D Long Reach Excavator Arm, Long Reach Excavator Arm And Boom**



More Images



Product Description

Premium Material Q690D / Q355B Long Reach Boom Excavator Boom for sale with Unloading Bucket for Unloading Sand Soil

click here to have our product catalog: [2024 Zhonghe Machinery--Product Catalog.pdf](#)

Quick Details:

Work Effectively
Balant and Safe



Brief instruction of excavator long arm:

Long arm excavators are specialized heavy machinery designed to enhance excavation and material handling tasks, particularly in challenging environments like jetties. These excavators feature extended boom arms that allow operators to reach farther and dig deeper without needing to reposition the excavator frequently.

Key Features

Extended Reach: The long arm design enables operators to access cargo from a greater distance, making it ideal for unloading materials from ships or barges at a jetty.

Versatility: Suitable for various materials such as sand, gravel, and silt, these excavators can efficiently handle different loading and unloading tasks.

Efficiency: Their ability to operate from a distance minimizes the need for repositioning, allowing for quicker unloading times and increased productivity.

Durable Construction: Many long arm excavators are built with high-quality materials, such as Shaogang Q355B steel, ensuring durability and resistance to wear and tear, even in demanding conditions.



Specifications:

Big boom, small arm, one bucket, one bucket cylinder, pins, other excavator accessories

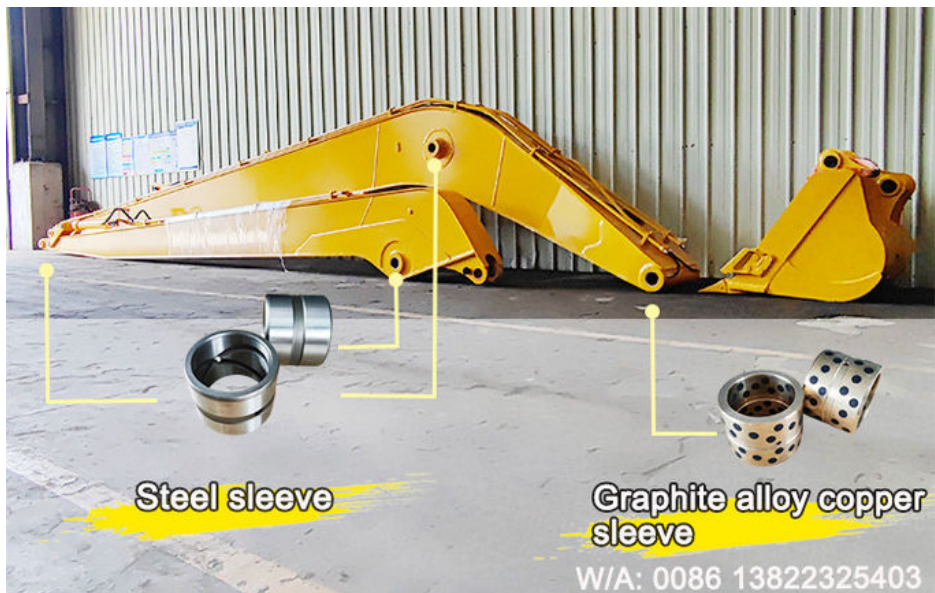
(The excavator accessories will be listed clear on the quotation, please contact Aria for any details. [Whatsapp: 0086 13822325403](https://www.whatsapp.com/channel/008613822325403))

Excavator Model(m)	Counterweight (ton)	Bucket capacity (cbm)	Boom(m)	
		Bucket cylinder	Arm(m)	
30-36T	0	0.6	11	Length(m) 19-20
		20T	9	
37-39T	0	0.6	11	
		20T	9	
40-47T	0	1	11	21-22
		25T	9	
25-28T	3.5T	0.4	12	
		12T	10	
30-33T	2.5T	0.4	12	
		12T	10	
35-39T	1.5T	0.6	12	
		20T	10	
40-47T	0	0.8	12	
		20T	10	
30-35T	3.5T	0.4	13	23-24
		12T	11	
35-39T	2T	0.4	13	
		12T	11	
40-47T	0	0.6	13	
		20T	11	

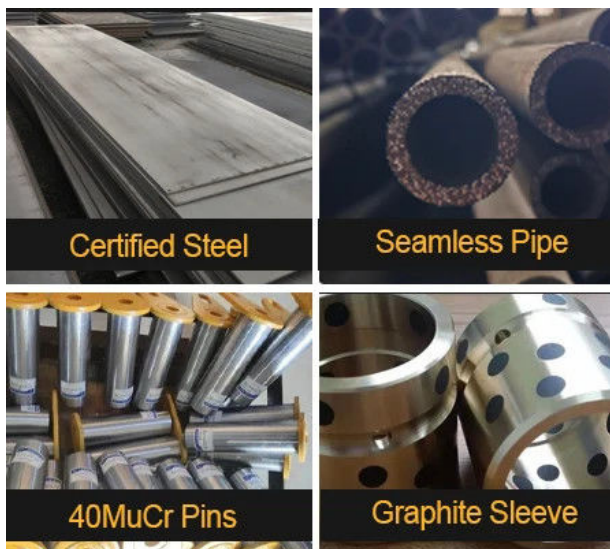
Excellent design of long reach boom arm:

- * Every plates are beveled before welding which enhances the welding strong, not easy cracking
- * Using better welding wire--Jinqiao Welding wire
- * Seamless pipelines -- there is no scrap in the pipelines
- * Rational internal ribs arrangement--ensure the long reach boom is strong enough and longer life-span
- * The boom end sleeve we use is Graphite alloy copper sleeve, other sleeve we use is steel sleeves





Professional Production Process:



Panel is cut by
CNC plasma
machine with
less deformation



《02

Tolerance within
5-10um, ensure
the accuracy of
hole



03》

GMAW-Gas
Metal Arc
Welding



《04

Environmentally
friendly verified
spraying room.
Professional and
beautiful paint
finish



Certifications:

Good feedback from clients: excavator long boom arm for sale is high-quality and has longer service life-span than other peers. The long boom excavator for sale is balant and safe. Very suitable for digging and helps a lot in construction works.



9 Huancui West Road, Cuishanhu New Area, Kaiping City, Guangdong Province, China