



16m 18m 19m Excavator Piling Boom And Arm Pile Driver Attachment High Strength

Our Product Introduction

for more products please visit us on excavatorlongarm.com

Basic Information

- Place of Origin: China
- Brand Name: Zhonghe Machinery
- Certification: CE, patent, ISO
- Model Number: DZB001
- Minimum Order Quantity: 1 set / piece
- Price: USD 300-7000
- Packaging Details: bubble / wooden cases
- Delivery Time: 8-35/works
- Payment Terms: T/T, L/C
- Supply Ability: 7 sets per week

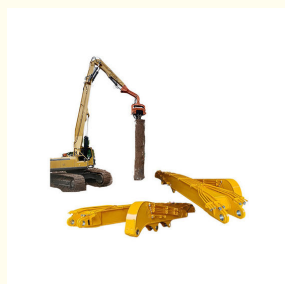


Product Specification

- Material: Premium Shaogang Q355B
- Apply To: 20 Ton - 85 Ton Excavator
- Length: 11m-24m
- Warranty: 6 Months
- Pile: Steel Sheet Pile, Cement Pile
- Customization: Customization Service Available
- Highlight: **19m Excavator Piling Boom, 16m Piling Boom and Arm, Pile Driver Boom And Arm**



More Images



Product Description

16m 18m 24m Excavator Pile Driving Arm Pile Driver Attachment For Excavators for Piling Steel Sheet Pile Cement Pile

Quick Details:

Pile higher: The angle between boom and arm can reach about 160°

Longer Life-span: The box has built-in transverse and vertical reinforcement ribs to improve its tensile strength

Not Easy Cracking: Multi-layer reinforcing rib plate at the stress place, more firm, integrated molding

Safety and High-Effective: The back bushing of the arm is wrapped by the whole board to avoid falling off



Save Engery & High effective

pile higher

built-in transverse and vertical reinforcement ribs

integrated molding

Multi-layer reinforcing rib plate at the stress place



welcome to contact Aria:
Whatsapp/wechat/tel: +86 13822325403

Description:

The excavator pile arm pile boom is frequently used in piling steel pile and cement pile. The boom is straight which ensures pile higher. The excavator pile arm pile boom often carry a pile hammer in working. Because the pile arm need to lift the front part high, the requirement of excavator pile arm pile boom is high. We adopt professional design of the internal reinforcement ribs and strength the places which bear huge stress.

Specifications:

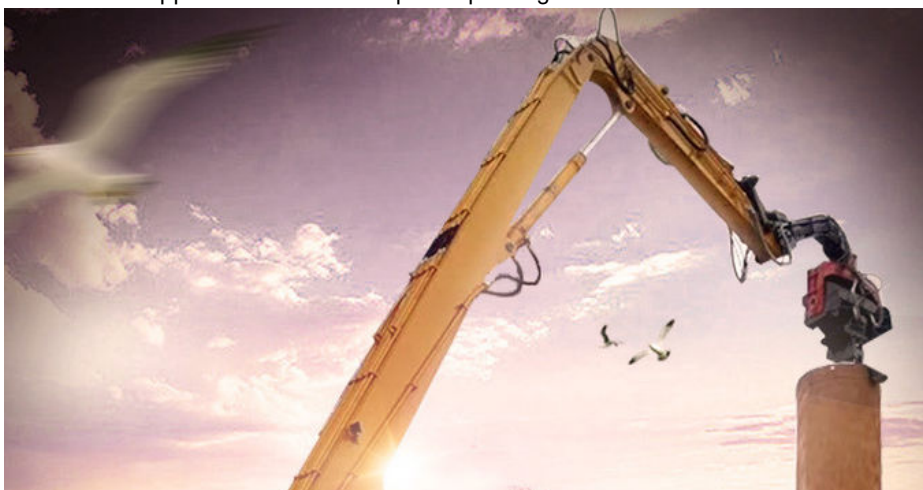
Excavator Model (ton)	Total Length (m)
20-24T	11-12m
25-28 T	12.5-13m
30-38 T	13.5m
36-39 T	15m
40-47 T	13-14.2m
40-50T	15-15.8m
45-52T	16.5-16.8m
47-52T	18-19m
65-85T	24m

welcome to send your excavator model to us, we will recommend suitable length to you according to your excavator model.



Excavator Pile Arm's details:

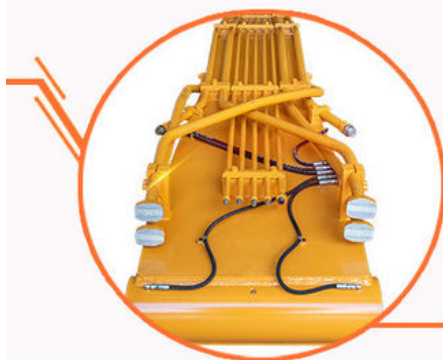
- * Comparing with the same length pile driving arm, ours can pile higher.
- * Adopt 90 degree elbow joint to avoid hose bending and increase it service life
- * Seamless precision steel pipe
- * Centralized lubrication system
- * The boom seat sleeve adopts all in one molding process
- * Graphite alloy copper sleeve
- * Hydraulic pipelines section design, convenient for later maintenance
- * Multi-layer reinforcing rib plate at the stress place, more firm, integrated molding
- * Reinforced upper and lower cover plates prolongs service life.





PILE DRIVING BOOM

ZHONGDE MACHINERY



Overall Quality

- * Q355B Material
- * Centralized lubrication system

Boom Base

- * Graphite alloy copper sleeve
- * The boom seat sleeve adopts all in one molding process



Precision Pipe

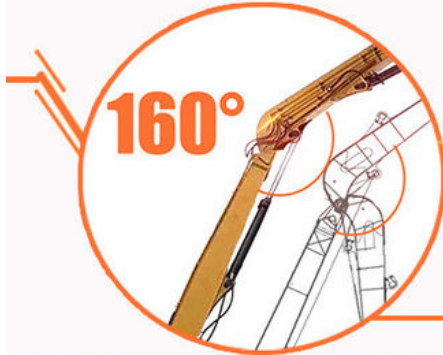
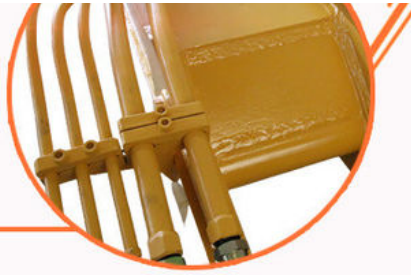
- * Seamless precision steel pipe
- * Hydraulic pipelines section design, convenient for later maintenance

Welding process



Welding Process

- *Four layers five passes welding
- *High-quality Ningbo connectors



Open Angle

- *The angle between boom and arm can reach 160°
- *Comparing with the same length pile driving arm, ours can pile higher.

Producing Details:

- * We are arm with a professional and experienced team, 24h available for answering your questions.
- * The production machine we have is the most precision.

[Welcome to contact for big discount.](#)



Jiangmen Kaiping Zhonghe Machinery Manufacturing Co., Ltd



+86 13822325403



aria@excavatorboomarm.com



excavatorlongarm.com

9 Huancui West Road, Cuishanhu New Area, Kaiping City, Guangdong Province, China