



## High Strength Q355B Excavator Tunnel Arm Customizable Excavator Boom Attachment

Our Product Introduction

for more products please visit us on [excavatorlongarm.com](http://excavatorlongarm.com)

### Basic Information

- Place of Origin: China Guangdong
- Brand Name: Zhonghe Machinery
- Certification: CE, patent, ISO
- Model Number: SDB0015
- Minimum Order Quantity: 1 set / piece
- Price: USD 200.00-USD6000.00
- Packaging Details: bubble or wooden case
- Delivery Time: 6-35/works
- Payment Terms: T/T, L/C
- Supply Ability: 7 sets per week



### Product Specification

- Material: Shaogang Q355B
- Apply To: 6 Ton - 50 Ton Excavator
- Warranty: 6 Months
- Suitable Working Condition: Tunnel Construction Work, Work In Narrow Places
- Cylinders: Enlarge Cylinders
- Plate Thickness: Thicker
- Highlight: Customizable Excavator Tunnel Arm, Tunneling Excavator Boom Attachment, High Strength Tunneling Excavator Boom



### More Images



## Product Description

Digging Tunnel Digging In Narrow Places excavator tunnel arm for sale excavator shorten arm with Bucket / Breaker

### Quick Detail:

Premium Material: Shaogang Q355B, better steel plate than other brands

Plate Thickness: Reinforced plate thickness

Cylinders: Enlarge cylinders

Protection Cover to keep away from crushing

## Stronger

## Save energy & High-effective

W/A: +86 13822325403



✓ Digging tunnel

✓ Digging rock

✓ Digging hard soil

### Description:

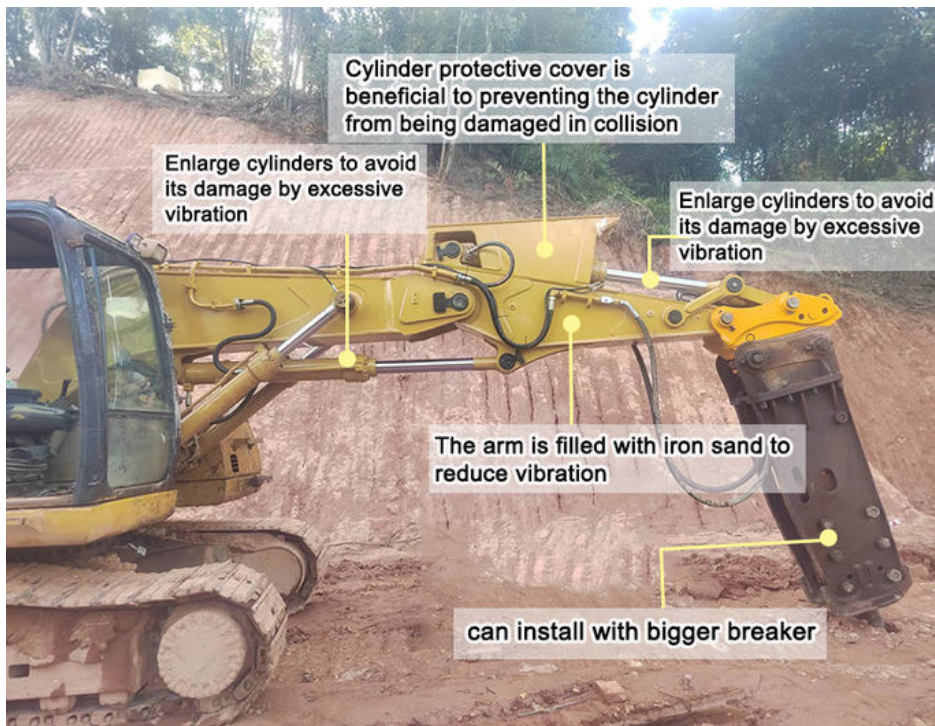
Excavator tunnel arm for sale is frequently used in digging tunnel or other narrow places. The design of tunnel arm excavator is smaller than standard arm standard boom. The front attachments can be bigger bucket or breaker. The customizable excavator tunnel arm is stronger than standard one. For working in tunnel / digging hard sand hard rock, there is high requirement for the plate thickness. Mini excavator tunnel arm's plate thickness is enhanced. The longevity is enhanced.

**Front Attachments:** enlarge bucket / breaker

### Specification:

Excavator Model ( ton)	Plate Thickness (mm)	Weight (kgs)
6-8 ton	10mm	590kgs 380kgs
10-15 ton	14mm	1130kgs 900kgs
20-24 ton	16mm	1300kgs 1050kgs
30-36 ton	25mm	2900kgs 2600kgs
45-50 ton	30mm	3200kgs 3000kgs

Enlarge bucket cylinder, enlarge stick cylinder.



#### Production Process:

- \* Beveling before welding
- \* Experienced Staffs
- \* Professional Testing

## Tunnel boom

- Meets the needs for powerful machines on rock breaker projects in confined tunnels
- A true customised reliable performer, with robust cylinder guard,,capable of break rock more effective, and with significantly smaller footprint.



## High effectiveness

1. On the same machine, tunnel arm can obtain greater lifting capacity than standard arm.
2. Opening angle between boom and arm can reach 180 degrees

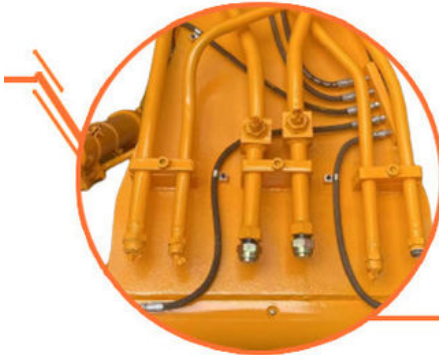
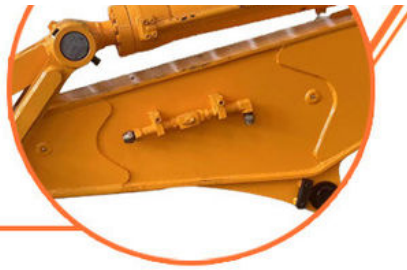
## Robust structure





## Robust structure

1. The upper and lower cover plates are thicker.
2. The arm is filled with iron sand to reduce vibration
3. Robust cylinder guard

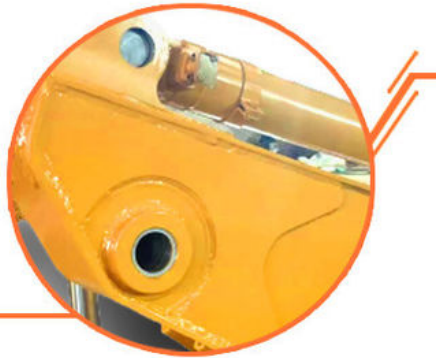


## Avoid oil leakage

1. Stop valves prevent oil leakage when replacing breaker by bucket.
2. Multi-layer welding for pipe connectors

## Long service life

1. Cylinder protective cover design
2. Q355B material, high-quality accessories, full weld, reinforced stress position, etc.



## Pivot end

HD Boom with pivot end reinforcement Single piece design & thicker steel plates

### Team Show:

We are a big manufacturer of excavator attachments. We are professional in designing and producing and knowing every steps of producing.

If you have any question concerning excavator tunnel arm. Welcome to contact and leave your message.

Welcome to contact for Big Discount.

Whatsapp: 0086 13822325403



**Jiangmen Kaiping Zhonghe Machinery Manufacturing Co., Ltd**



+86 13822325403



aria@excavatorboomarm.com



excavatorlongarm.com

9 Huancui West Road, Cuishanhu New Area, Kaiping City, Guangdong Province, China