



12M 10M Telescopic Digger Sliding Boom Arm , Q355B Excavator attachments

Our Product Introduction

for more products please visit us on excavatorlongarm.com

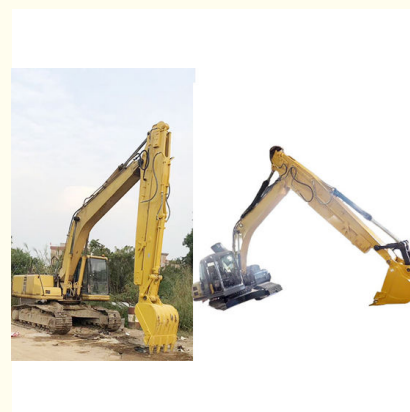
Basic Information

- Place of Origin: Guangdong China
- Brand Name: Zhonghe Machinery
- Certification: CE, patent, ISO
- Model Number: HB001
- Minimum Order Quantity: 1 set / piece
- Price: USD 200.00-USD8000.00
- Packaging Details: bubble, wooden case
- Delivery Time: 5-35/works
- Payment Terms: T/T, L/C
- Supply Ability: 8 sets per week



Product Specification

- Material: Shaogang Q355B
- Digging Depth: 4m, 8m, 10m, 12m
- Condition: New
- Apply To: 3 Ton - 55 Ton
- Bucket Capacity: 0.1 Cbm - 1cbm
- Warranty: 6 Months
- Highlight: **Q355B Digger Sliding Boom Arm,
12M Digger Sliding Boom Arm,
10M Digger Sliding Boom**



More Images



Product Description

10M 12M Telescopic Boom Telescopic Excavator with Bucket for Digging Foundation Pits Excavator Long Arm

Quick Detail:

High-quality material: Shaogang Q355B, better Q355B material than others

Safe: Double-limit design ensure safety

Longer Life-span: Two main plates are cut from a whole plate. Double oil seal design prolong the service life of excavator telescopic

Description:

Excavator arm and excavator boom is frequently used in digging foundation pits and other narrow places. The operation principle is extending and retracting by cylinder. Compared with standard arm, the telescopic boom excavator can reach deeper. When the excavator sliding boom arm is retracting and transport, the arm will not hit the cab. The long boom excavator is hot-sale nowadays for its versatility.

Apply to: Digging foundation pit, narrow places.

Specifications:

One set of sliding boom excavator includes: one sliding arm, one bucket, two pins, 2 high-pressure hoses, one two-way foot switch. If you also need other excavator accessories, we can also add up it.

Excavator model(ton)	bucket capacity (cbm)	Maximum Digging Depth
3-4 ton	0.1 cbm	4m
6-8 ton	0.2 cbm	6m
10-12 ton	0.35cbm	8m
20-27 ton	0.5 cbm	10m
30-36 ton	0.6 cbm	12m

Telescopic Dipper Arm's details:

- * Double-limit design
- * Double cylinder seal
- * Two middle plates are cut from one whole plate, the service life-span is longer.

Production Process of Excavator Boom Arm:

- * Professional
- * Comprehensive Testing



Jiangmen Kaiping Zhonghe Machinery Manufacturing Co., Ltd



+86 13822325403



aria@excavatorboomarm.com



excavatorlongarm.com

9 Huancui West Road, Cuishanhu New Area, Kaiping City, Guangdong Province, China